

lighting

Sparkle
& Style
CREATE
ROOMS
THAT
WOW!

Lighting Mistakes
(*and How to Fix Them*) p. 114

202 PRODUCTS YOU'LL LOVE



FREDRICK RAMOND
Hinkley's luxury line
THE XANADU COLLECTION

FIND LIGHTING YOU WILL LOVE HINKLEYLIGHTING.COM

HINKLEY

L I G H T I N G

Mihanbana.com

lighting™

contents

24 contemporary

Clean lines and sleek materials distinguish some of the many contemporary lighting choices.

38 traditional

Classic, formal lighting remains a design aesthetic of choice for many homeowners.

48 transitional

The distinctly personal mix of styles, materials, and fabrics in transitional-focused rooms makes its mark on lighting.

60 cottage

Find design inspiration to make your favorite spaces full of cottage-focused welcome and warmth.

70 exterior

Give your landscape some lighting love with inventive ideas for pathways, entrances, flowerbeds, and more.

77 buyer's guide

For updates or new spaces, our collection of chandeliers, lamps, ceiling fixtures, pendants, ceiling fans, sconces, bulbs, mini lights, and controls will get your design ideas flowing.



24



78



70



60



Shown: Link™ Ceiling Fan 300168 PN

Comfort & Style

departments

11 before & after

107 light the future

108 lighting you can use

110 your lightbulb questions answered

112 ten things to do this year to improve your lighting

114 common lighting mistakes

116 design upgrade

117 budget sense for bulbs

118 resources

Show-stopping designs and flawless finishes are just the start of what you'll love about Kichler Ceiling Fans. We've also built in function that's designed to perform: premium motors, superior controls and energy-saving features. You'll soon discover that your Kichler Ceiling Fan is the one thing that makes your room both more comfortable and more beautiful. To see our entire line of Ceiling Fans and Lighting, visit kichler.com or call 866.558.5706.



attention to detail



CRYSTORAMA

Subtle color twists and metallic accents give transitional fixtures such as this chandelier an eclectic boost.

In my house, I'm notorious for constantly adjusting the lights. I've threatened to "charge" both my husband and kids a quarter for every light they leave on, and I find myself fussing with controls and layers throughout the day.

Maybe no one else in my family notices the difference, but to me, light—its lack, abundance, quality, placement—has become a key element in how much (or how little) I enjoy my rooms from day to day. It comes with the professional territory, I suppose, and even if my family groans and grimaces, they are the ones to reap the benefits.

Years ago, I was like many homeowners, content to install lighting and leave it be.

To me, the bigger worries were the obvious

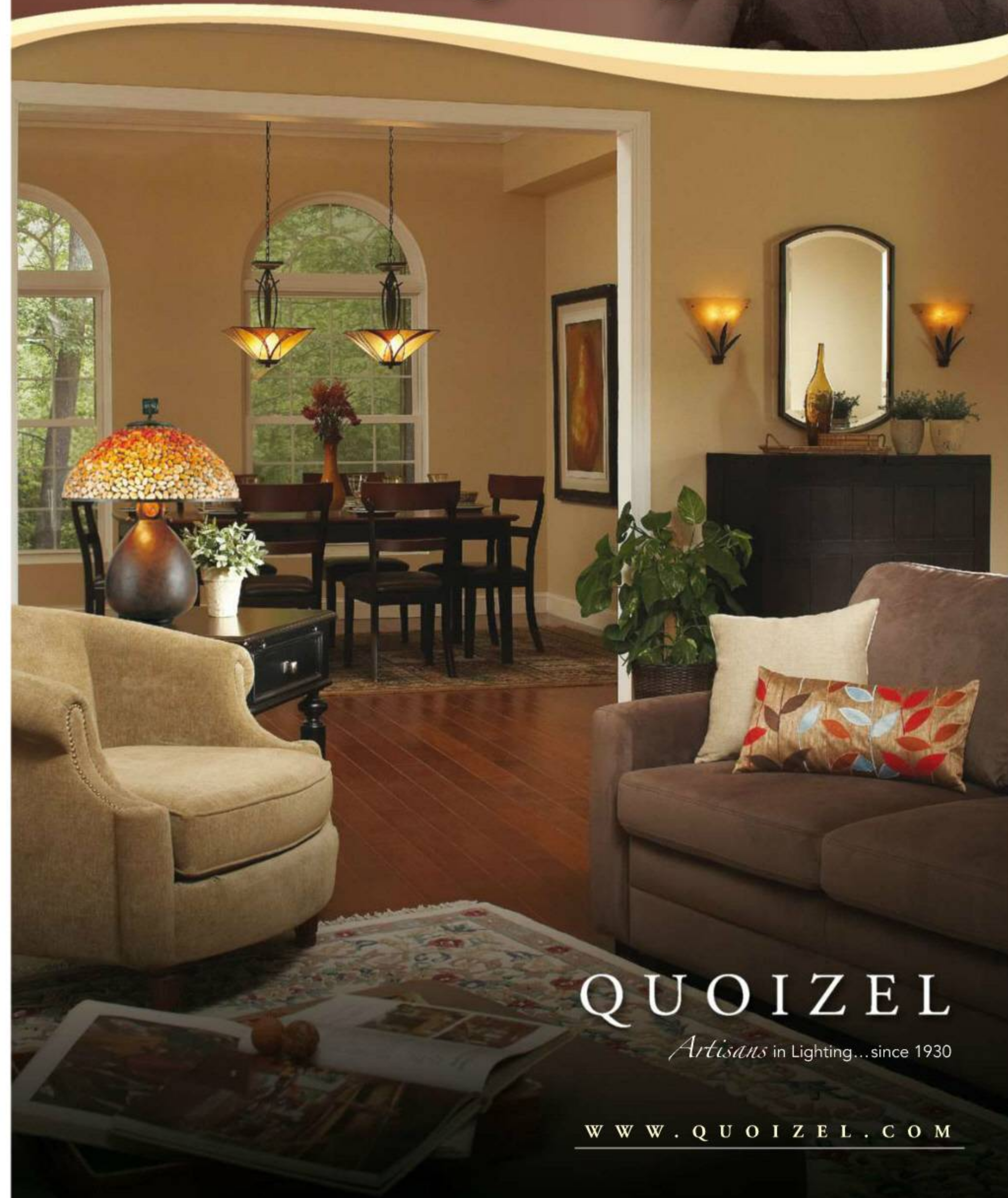
elements in a room's decor: rugs, bookshelves, sofas, or (gasp) televisions. But lighting, like every other piece of our well-loved homes, needs tender loving care over the years. It becomes outdated or out of place, or needs a boost in order to keep pace with our changing families and their needs. For my household, that's meant changes big and small. Throughout the years, our home's fixtures have become an integral part of our aesthetic, in ways I would have never imagined lighting would.

We hope this issue of *Lighting*—possible with the help of the American Lighting Association—inspires you to make changes of your own—new pendants, updated dimmers, focal-point chandeliers. If you're not sure where to start, or even if you know exactly what you want but don't know where to get it, a lighting showroom near you is the perfect place to visit. The experts there can show you light-perfect ways to brighten your rooms, highlight your home's best features, and update any ho-hum fixtures.

As for myself, I've got my eye on some wireless motion sensors to shut off the lights in our oft-used rooms. For my kids, it beats the clink in that quarter jar any day.

Kelly Blum

Artistry in Lighting



QUOIZEL

Artisans in Lighting...since 1930

WWW.QUOIZEL.COM



ATTENTION MAGAZINE LOVERS

We are looking for enthusiastic readers to join our **Magazine Advisers Community**.

Here's your chance to help us with magazines about:

- Food & cooking
- Decorating & remodeling
- Gardening
- Holidays

PLUS
ENTER FOR A
CHANCE TO WIN
\$10,000*

Join today to get **exclusive previews** of our newest issues and share your opinions about how we can make them even better. It takes just a few minutes, and as a special thank-you for your help, you can **enter to win \$10,000***. Plus, as you participate in our future surveys, you'll be **eligible for other sweepstakes prizes**.

**MAGAZINE
ADVISERS
Community**

Get started today at
magazine-advisers.com

* NO PURCHASE OR SURVEY PARTICIPATION IS NECESSARY TO ENTER OR WIN. Subject to Official Rules at www.meredith.com. Sweepstakes begins at 12:00 am ET on October 1, 2013 and ends at 11:59 pm ET on September 30, 2014. Open to legal residents of the 50 United States, and the District of Columbia, 21 years or older. Sweepstakes is offered by Meredith Corporation and may be promoted by many of its publications and brands in various creative executions online and in print. Limit one (1) entry per person and per email address, per survey. Void where prohibited. Sponsor: Meredith Corporation.



EDITORIAL DIRECTOR JAMES D. BLUME
Managing Editor DOUG KOUMA
Executive Editor, Food JAN MILLER
Deputy Content Director, Home Design KARMAN HOTCHKISS
Senior Design Director GENE RAUCH

lighting™

Editor Karmán Hotchkiss
Designer Becky Lau Ekstrand
Contributing Editors Larry Lauck, Kelly Roberson
Contributing Designer Mary Pat Crowley
Contributing Copy Editor Amy Kuebelbeck
Contributing Proofreader Paul Soucy
Administrative Assistant Sue Miller

HOME DESIGN
Senior Editors Ann Blevins, Samantha Hart, Bethany Kohoutek, Marie McCartan, Samantha S. Thorpe
Senior Associate Editor Maria V. Charbonneau
Associate Editor Kristina McGuirk

FOOD
Senior Editors Carlos Acevedo, Jessica Saari Christensen
Associate Editors Lisa Appleton, Carrie Boyd
Better Homes and Gardens® Test Kitchen Director Lynn Blanchard

HEALTH
Senior Editor Martha Miller Johnson
Senior Associate Editor Jessie Shafer
Digital Editor Lori Brookhart-Schervish

GARDENING
Editor James A. Baggett
Better Homes and Gardens Test Garden® Manager Sandra Gerdes

ART
Senior Associate Art Directors Michelle Bilyeu, Nick Crow, Rebecca Lau Ekstrand, Stephanie Hunter, Kimberly Morgan Metz
Associate Art Director Nicole Dean Teut
Assistant Art Directors Christy Brokens, Rachel Kennedy, Nikki Sanders, Ananda Spadt, Lori Sturdivant

EDITORIAL ADMINISTRATION
Assistant Managing Editor Jennifer Speer Ramundt
Senior Copy Editors Sheila Mauck, Metta Cederdahl West
Associate Copy Editor Joleen Ross
Editorial Operations Manager Cindy Slobaszewski
Business Office Assistants Jan Crabb, Kim O'Brien-Wolett, Gabrielle Renslow, Sue Miller, Lori Eggers, Katie Swensen, Marlene Todd
Director, Premedia Services Amy Tincher-Durik
Quality/Technical Director Dave Wolvek
Director, Meredith Photo Studios Bob Furstenuau
Prepress Desktop Specialist Jill Hundahl
Color Quality Analyst Dale Tunender

EDITORIAL LEADERS
Brand Leader and Executive Vice President Gayle Goodson Butler
Creative Director Michael D. Belknap
Content Director, Home Design Jill Waage
Content Director, Food Jennifer Dorland Darling

CONTRIBUTING FIELD EDITORS
Atlanta Lisa Mowry Baltimore Eileen Deymier Birmingham, AL Cathy Still McGowin
Charleston, SC/Savannah Sandra L. Mohlmann Charlotte/San Diego Andrea Caughey
Chicago Megan Chaffin, Chandra Hammond, Elaine Markoutsas Denver Mindy Pantiel, Elaine St. Louis
Detroit/Toronto Kristi S. Zimmeth Jaffrey Center, NH Stacy Kunstel Los Angeles Darra Baker, Laura Hull, Robin Tucker
Minneapolis/St. Paul Bonnie Broten, Heidi Pearson, Melea Stevens Nashville Anna Forkum
New Orleans Margaret Zainey Roux Newport, RI Lynda Sutton New York City Jorge S. Arango
New Patz, NY Anna Molvik Portland, ME Susan Salomon San Francisco Sarah Alba Saratoga Springs, NY Donna Talley
Seattle Linda Humphrey Washington, DC Jeanne Blackburn Chatham, IA Karin Lidbeck-Brent

For editorial questions, e-mail solighting@meredith.com or write us at Lighting, Special Interest Publications, Meredith Corp., 1716 Locust St., Des Moines, IA 50309-3023.

For reuse and reprint requests, contact CI.permissions@meredith.com.

PROGRESS
LIGHTING

PENDANTS ARE IN!

Stay on trend and customize your home with Progress Lighting



www.progresslighting.com

Shown P5188-09



Shown P5183-09



2014 Design Tip: Group two or more pendants in kitchens and baths to add beautiful, functional lighting in the most used areas of your home. See more ideas at progresslighting.com/pendant-lighting-gallery

Shown P5186-104WB, P5184-104, P5174-104

On the Web

Find slideshows, videos, sweepstakes, and more at BHG.com.

LIGHTING FOR YOUR HOME

1. Living Room Ideas

Getting the light right can be tricky. You need good overall lighting, but you also want task lighting for reading and accent lighting on artwork and other focal points. Learn how at BHG.com/LivingRoomLighting.

2. Bedroom Ideas

It's all about setting a mood. Learn about lamp heights, placing chandeliers, and more at BHG.com/BedroomLighting.

3. Bathroom Ideas

Great looks require the right type of shadow-free lighting. Bring bathrooms up to date with BHG.com/BathroomLighting.

4. Outdoor Ideas

Help guests feel welcome by greeting them with entry lanterns, path lighting, and more. Go to BHG.com/OutdoorLights.

5. Landscape Lights

Find a great selection of lighting products that will enhance the style and safety of any home at BHG.com/LandscapeLights.



Everyone at *Lighting*™ magazine would like to thank the American Lighting Association

for its help in producing this issue. We couldn't have put the magazine together without the assistance of ALA staff and members. The ALA represents leading lighting manufacturers, showrooms, manufacturers' representatives, and designers throughout North America, and is a resource for consumers interested in the latest residential lighting products and other home lighting topics, including energy-efficient bulbs and fixtures. To find more information and a list of lighting specialty stores near you, visit americanlightingassoc.com or call 800/274-4484.

Mihanbana.com



ADVERTISING

Vice President and Publisher BRENDAN SMYTH brendan.smyth@meredith.com
Associate Publisher, Marketing STACY SHAPIRO FELDMAN stacyshapiro.feldman@meredith.com

NEW YORK ADVERTISING SALES

805 Third Ave., New York, NY 10022; 212/455-1349; Fax: 212/551-7192
Account Manager MARIA PRUYN maria.pruyn@meredith.com
Account Manager GRACE CLARKE grace.clarke@meredith.com

CHICAGO ADVERTISING SALES

333 N. Michigan Ave., Chicago, IL 60601; 312/580-1615; Fax: 312/580-7909
Account Manager MICHELLE BALAZ michelle.balaz@meredith.com
Account Manager LISA MORTON lisa.morton@meredith.com
Sales Assistant NANCY ECHEVERRIA nancy.echeverria@meredith.com

SOUTHEAST ADVERTISING SALES

Navigate Media, 1875 Old Alabama Rd., Suite 1320, Roswell, GA 30076;
678/507-0110; Fax: 678/507-0118
Account Executive GARY D. DENNIS gary@navigate-media.com

WEST COAST ADVERTISING SALES

1990 S. Bundy Dr., Suite 500, Los Angeles, CA 90025;
310/689-1627; Fax: 310/479-2692
Account Manager BIANCA HALEY bianca.haley@meredith.com

ADVERTISING OPERATIONS

1716 Locust St., Des Moines, IA 50309-3023
Senior Production Manager APRIL BRACELIN
Advertising Operations Manager LIBBY EHMKE Production Director KENT POLLPETER
Product Manager DEBBIE REYNOLDS Consumer Marketing Director LIZ BREDESON
Consumer Marketing Managers MARINA MCGREGOR, BLAINE ROURICK

MARKETING SERVICES

212/455-1349; Fax: 212/551-7192
Senior Integrated Marketing Manager KATHLEEN KEANE kathleen.keane@meredith.com
Associate Integrated Marketing Manager SAMANTHA FRIEDMAN samantha.friedman@meredith.com
Promotion Art Director LORI CHRISTIANSEN lrd.christiansen@meredith.com

DIRECT MEDIA

Fax: 212/499-6757
Advertising Director GRACE CHUNG-MUI grace.chung-mui@meredith.com 212/499-6719
Business Development Manager STEPHANIE BARREZUETA stephanie.barrezueta@meredith.com 212/499-6723
Business Development Manager CARA JACOBS cara.jacobs@meredith.com 212/499-6770

CRAFTS GROUP ADVERTISING SALES

Vice President and Publisher, Crafts Group TOM DAVIS
Advertising Sales Director AMY GATES amy.gates@meredith.com
Advertising Account Executive MEREDITH JINKS meredith.jinks@meredith.com
Project Supervisor BETHANY PETERSON bethany.peterson@meredith.com
Sales Assistant ASHLEY MCGRAW ashley.mcgraw@meredith.com

NEWSSTAND

Retail Brand Managers
Home, Garden, and Holiday DAWN ANGUS

FINANCIAL ADMINISTRATION

Business Director JANICE CROAT Associate Advertising Business Manager EDWARD HAYES
Business Manager JENNA HETCKO Product Sales HEATHER PROCTOR

Meredith National Media Group

President | TOM HARTY

EXECUTIVE VICE PRESIDENTS

President, Media Sales | RICHARD PORTER
President, Better Homes and Gardens | JAMES CARR
President, Parents Network | CAREY WITMER
President, Women's Lifestyle | THOMAS WITSCHI
President, Meredith Digital | JON WERTHER
Creative Content Leader | GAYLE GOODSON BUTLER
Chief Marketing Officer | NANCY WEBER
Chief Revenue Officer | MICHAEL BROWNSTEIN
Chief Innovation Officer | JEANNINE SHAO COLLINS
General Manager | MIKE RIGGS
Director, Operations and Business Development | DOUG OLSON

SENIOR VICE PRESIDENTS

Chief Technology Officer | JACK GOLDENBERG
Chief Digital Officer | ANDY WILSON
Digital Sales | CAROLYN BEKKEDAH
Research Solutions | BRITTA CLEVELAND

VICE PRESIDENTS

Business Planning and Analysis | ROB SILVERSTONE
Consumer Marketing | JANET DONNELLY
Corporate Marketing | STEPHANIE CONNOLLY
Corporate Sales | BRIAN KIGHTLINGER
Digital Video | LAURA ROWLEY
Direct Media | PATTI FOLLO
Brand Licensing | ELISE CONTARSI
Communications | PATRICK TAYLOR
Human Resources | DINA NATHANSON
Newsstand | MARK PETERSON



Chairman and Chief Executive Officer | Stephen M. Lacy
President, Meredith Local Media Group | Paul Karpowicz

Vice Chairman | Mell Meredith Frazier

In Memoriam | E. T. Meredith III, 1933-2003

Featured Product: Malia

See our new arrivals at feiss.com/NEW

FEISS®

EST. 1955

GENERATION BRANDS

©2024 Feiss, Feiss is a registered trademark of Murray Feiss.

**UL SERVICES AND
EXPERTISE BRING
NEW OPPORTUNITIES
TO LIGHT**



THE MARK

The UL Mark is the single most accepted Certification Mark in the United States, appearing on 22 billion products annually. UL a global leader in testing, inspection, certification, auditing and validation has served the lighting industry since its inception. Today, the UL Mark signifies that a product has successfully met UL's stringent standards for product safety, energy efficiency and environmental claims.

EVOLUTION

Rapidly evolving thinking about energy efficiency and public safety — along with exciting technological advances — is driving the evolution of the lighting industry, providing greater opportunities and growing challenges. Today's leading manufacturers leverage UL's safety science expertise, worldwide presence, and active involvement in the lighting industry to gain access and meet requirements to the global marketplace.

SHOWROOMS

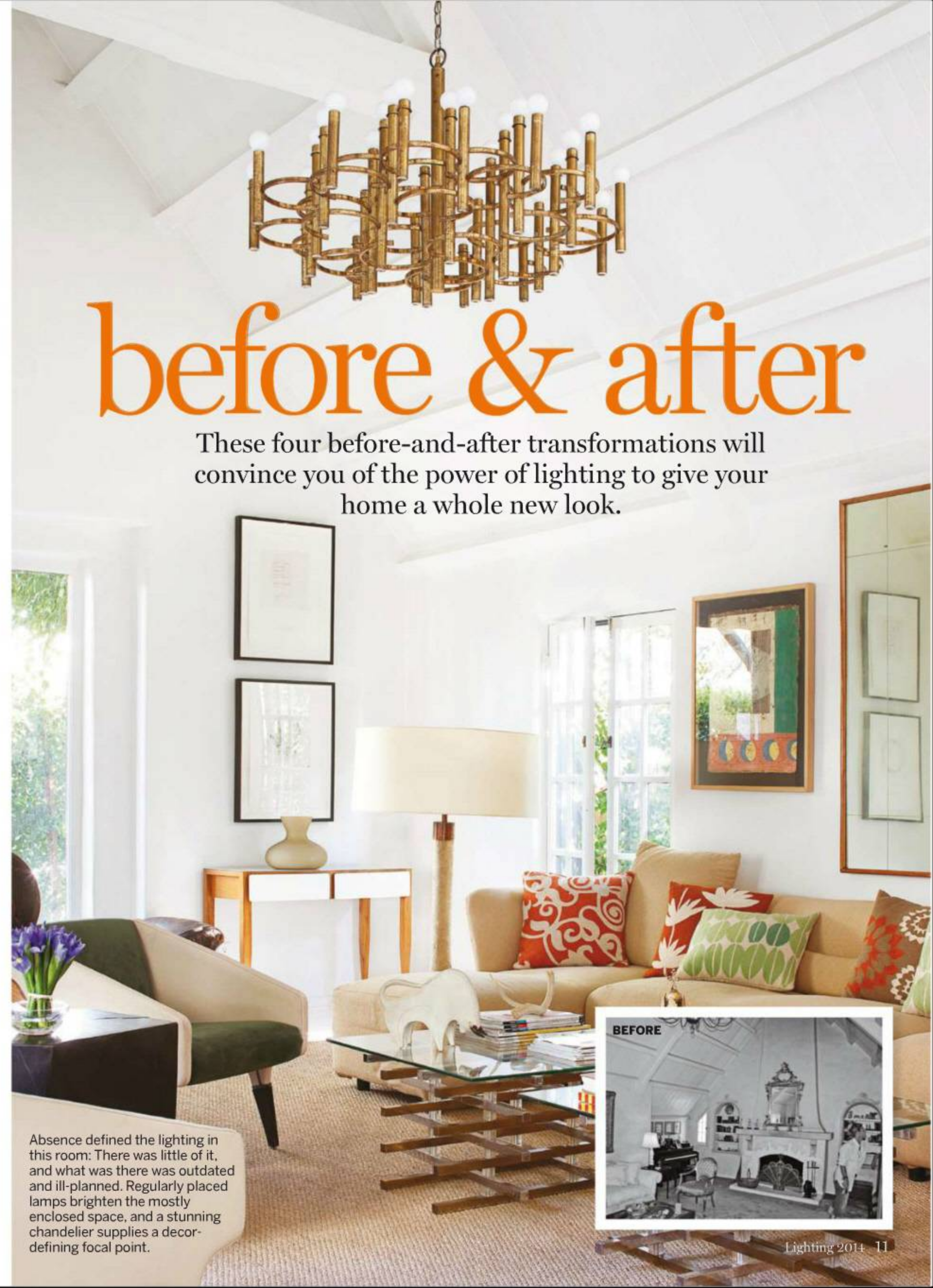
UL works closely with the American Lighting Association to help consumers transition to efficient, safe, high-quality lighting products. UL's LightSmart™ App helps explore lighting technology directly in your showroom.

**Learn more about UL's lighting solutions
today at www.ul.com/lighting**



before & after

These four before-and-after transformations will convince you of the power of lighting to give your home a whole new look.



Absence defined the lighting in this room: There was little of it, and what was there was outdated and ill-planned. Regularly placed lamps brighten the mostly enclosed space, and a stunning chandelier supplies a decor-defining focal point.



NEED
INSPIRATION
FOR
LIGHTING
IDEAS?
JUST
LOOK
AROUND.



INSPIRATION. It's all around, waiting to surprise and delight. And there's no better place to find your lighting and design inspiration than at a lighting showroom. There you'll find imagination and expertise along with the newest and brightest trends. Find a lighting showroom near you at americanlightingassoc.com.

american
lighting
association



Craftmade

JEREMIAH ELLINGTON TEIBER EXTERIORS

Added height in the now-vaulted ceiling gave these homeowners room to include an oversize Shaker-inspired chandelier. Forged-iron details give the fixture a weightlessness that amplifies the room's light and bright feel.



BEFORE



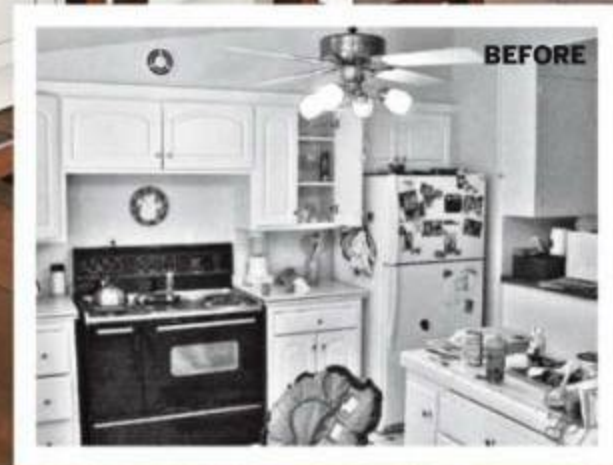
www.craftmadebrands.com

Download the Craftmade App for your iPhone to view our full catalogs!



A clunky, crowded ceiling felt all the more claustrophobic thanks to an outdated ceiling fan. Skylights and revealed beams help, as do midsize pendants that offer plenty of illumination for the work surface.

WE HELP YOU FOCUS ON WHAT REALLY MATTERS.



You Can Be Confident When Products Display CSA Marks

We're CSA Group, one of North America's leading independent testing laboratories. For more than 90 years, CSA Group has provided peace of mind for consumers by testing and certifying products to established standards for safety and performance including energy efficiency specifications for ENERGY STAR®. You'll find our marks on products that you put your trust in every day, including lighting, appliances, gas grills, electronics, plumbing fixtures, heating and cooling equipment, power tools, lawn and garden equipment, athletic headgear, and many more.

Learn how CSA Group is helping create a safer and more sustainable world at www.csagroup.org.

North America | Europe | Asia • 1.800.463.6727



NEED
INSPIRATION
FOR
LIGHTING
IDEAS?
JUST
LOOK
AROUND.



INSPIRATION. It's often right in front of us. We just need a little help seeing it. That's where a lighting showroom shines. There you'll find inspiration and expertise along with the newest and brightest trends. Find a lighting showroom near you at americanlightingassoc.com.



The layout of this kitchen worked well enough, but inadequate lighting hampered even the most basic cooking and cleanup tasks. A stylish drum shade provides a bold punch of color and pattern on the oversize pendant, while sconces light up the work space.



MADERACOLLECTION

DRAMATIC ANGLES / UNENCUMBERED LINES



Six styles to choose from featuring a rich combination of a polished nickel frame softened with taupe finished tapered wood slats.

 ELK



elklighting.com / toll free 800.613.3261

**Before your LED light
made it here...**



You Expect Quality. Intertek Delivers.

To verify that LED lights will last as long as advertised, lighting manufacturers put their products through nearly 9 months of testing at Intertek laboratories.

How can you be sure a new LED is going to create warm light, save money, and last longer than your old light bulb? Because we tested it.

Intertek measures LED lights for energy efficiency, lifetime hours, light output, color temperature, and a variety of other factors.

Since our beginnings as Thomas Edison's Electrical Testing Laboratory over 115 years ago, generations have relied on Intertek's ETL mark to verify product safety. As technology evolves, Intertek helps manufacturers and consumers make smart choices in bringing the highest quality lighting into the market, and into your home.



Valued Quality. Delivered.



Intertek

lighting styles

No matter your design aesthetic, there's a lighting fixture to match. Take a tour through rooms gracious and good-looking.





contemporary

Modern-focused style can mean different things to different homeowners. For some, it means embracing the midcentury retro aesthetic. For others, it suggests design that looks toward the future. Here's how contemporary lighting translates into 21st-century homes.



THIS PHOTO One way to successfully mix several modern-influenced fixtures is to pick a consistent material or color. Here, stainless steel unifies this distinctive chandelier and pendants.

OPPOSITE Futuristic details put the assembly of this sculptural fixture on display.



THIS PHOTO Natural light becomes part of the mix in this sunny contemporary space. Dimmers and other controls allow for graduated light based on the time of day.

RIGHT Inspired by history, super-contemporary fixtures focus on the artistry of the bulb. Taken together, the bulbs in this collection provide enough illumination for the work space.

RIGHT: BULBRITE LEFT: KICHLER LIGHTING

a larger chandelier will, in general, cast more light and be better suited to a bigger room. To figure out the appropriate diameter of a fixture for a space, use this rule of thumb: Add together the length and width of the room, in feet. That same number in inches is the suggested width for a chandelier. In a 12×12 room, for example, a piece 24 inches across will provide enough light and feel properly proportioned.





Lighting designers are pushing the boundaries of illumination to create fixtures that easily serve as wall or ceiling art, too. This eclectic fixture combines materials and color with subdued light, perfect for an entryway showpiece.



ARTERIOURS

In general, an odd number of lights—three pendants, five sconces, for example—is more aesthetically pleasing in a room.



ABOVE Updated materials in contemporary light fixtures now include such diverse choices as wood grain, used here to complement the warm collection of neutral tones.

LEFT Versatile track lighting sources enable homeowners to include a variety of lighting types on one fixture. Individualizing a modern-inspired room becomes as easy as attaching mini pendants for task lighting and spotlights for accent.



LEFT: JESCO ABOVE: HINKLEY LIGHTING



Add a touch of luxury and glamour to your home with our new NIKKI fan.

The Nikki Fan features a modern *crystal inlay* wrap and an elegantly warm LED light source. Choose between Polished Nickel and our NEW Soft Touch White finish to complement your room design.

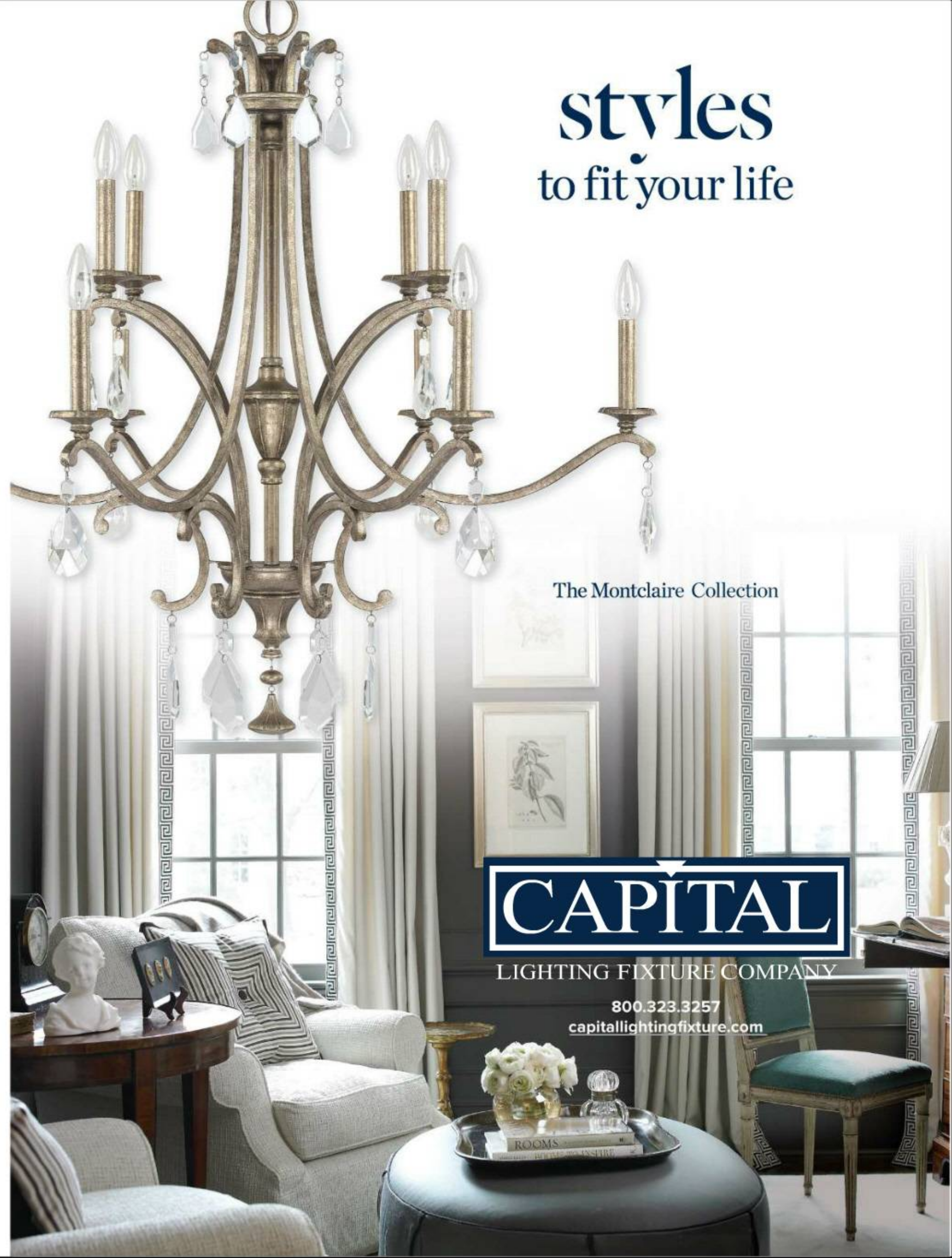
To see all new and unique designs, visit us at montecarlofans.com/NEW

MONTE CARLO
CEILING FAN COMPANY

GENERATION BRANDS

©2014 Monte Carlo. Monte Carlo is a registered trademark of Monte Carlo Fan Company.

Light fixtures that hug the ceiling in dramatically vaulted spaces may be shadow-inducing. Instead, opt for fixtures that can be adjusted downward and, ideally, cast light to both the top and bottom of a room.



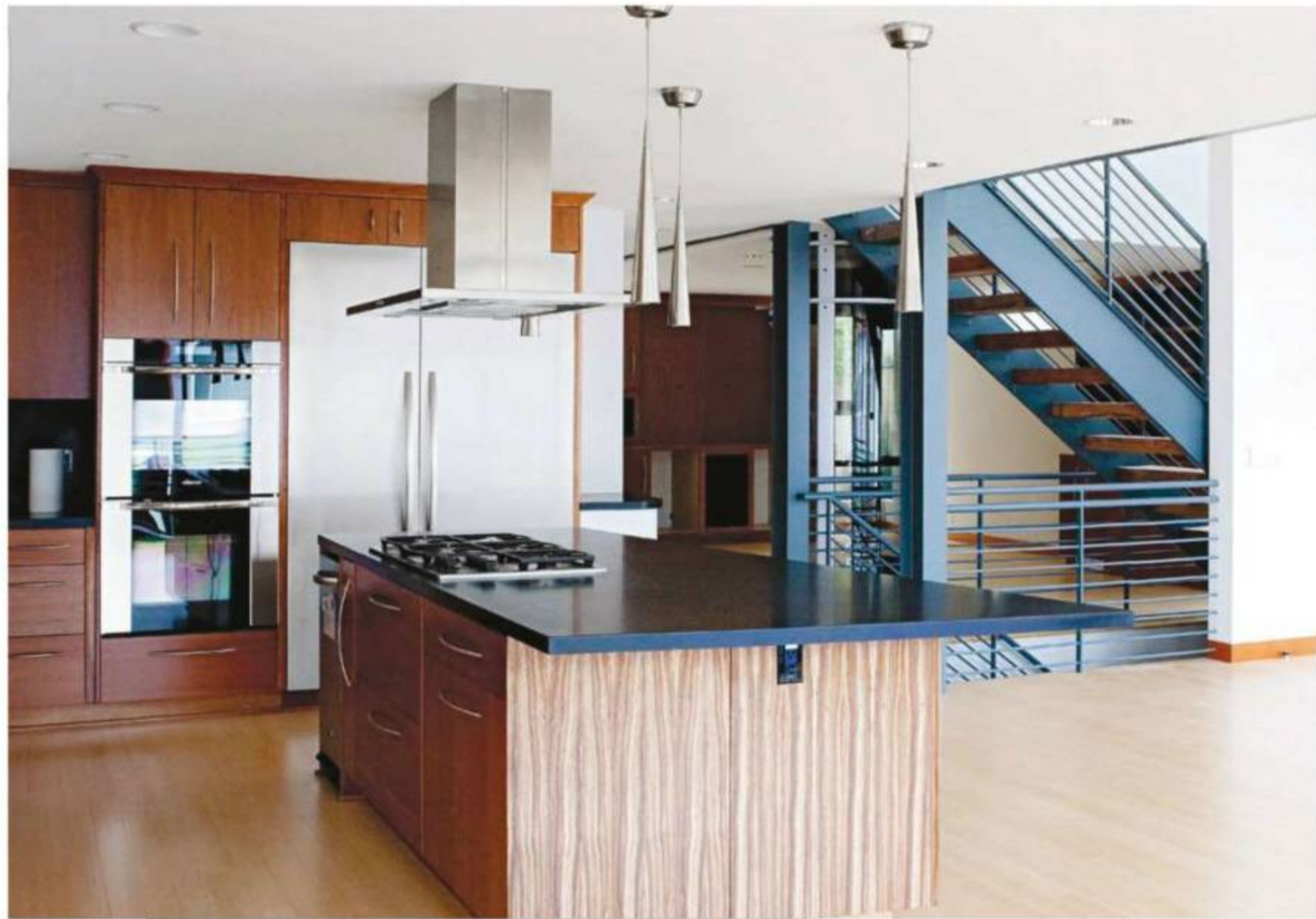
styles
to fit your life

The Montclair Collection

CAPITAL

LIGHTING FIXTURE COMPANY

800.323.3257
capitalightingfixture.com



LEFT: ACCESS LIGHTING BELOW; WAC LIGHTING



ABOVE Large expanses of space used to be filled with large lighting fixtures. But using multiple smaller pendants, sconces, or ceiling fixtures may provide the same amount of illumination, as seen with the trio above this island.

LEFT For low-ceiling spaces, chandeliers that offer horizontal presence without vertical clutter—as with this laterally designed fixture—may be a good solution.

RIGHT Multiple mid-size pendants provide an alternative to a chandelier as a way to fill a high-ceilinged space.





get the look

Quirky lighting ensembles take center stage in this cheery, modern-inclined space. Here's how to replicate the lighting choices.



Arbon

Use your chandelier arbon to add fluid form and material play.

KICHLER LIGHTING, kichler.com



Giuliana

Textured glass adds pattern interest to this otherwise understated pendant.

ARTERIORS, arteriorshome.com



Hampton

Contemporary doesn't have to mean unadorned. Crystals add sparkle to this translucent shade.

CRYSTORAMA, crystorama.com



traditional

Symmetrical details and furnishings, lavish colors, ornate accents: These hallmarks of traditionally inspired rooms play out in lighting choices, too.



THIS PHOTO Scale works both ways: Smaller spaces demand smaller light fixtures, while a room with expansive height and width should also influence the illumination choices. Here, a larger fixture hangs a bit lower than normal, thanks to the centering tabletop in the entryway.

OPPOSITE No matter the fixture size, shades that angle out at the bottom help push illumination toward the floor or work surface.

In a room that's chock-full of pattern, consider using a lighting fixture in a single color or material to supply a soothing visual element.



ABOVE A lighting family—lighting fixtures of the same design as in this dining room—is a simpler, less stressful option for establishing an overall design aesthetic for a room.

LEFT Elegantly combined materials or colors can add a distinctive pop, even to traditional lines of fixtures such as this sconce and chandelier.



ABOVE: QUOZEL LEFT: MALCO

NOW APPEARING IN BEAUTIFULLY LIT ROOMS EVERYWHERE.

The Jax collection.



Family: Jax
Technology: LED
Finish: Polished Nickel
Look: Magical

NUVO[®]
LIGHTING
There's so much to design

SATCO[®]

Another innovative Satco brand • www.nuvolighting.com
National Toll-Free: 1.800.43.SATCO (1.800.437.2826) www.satco.com
Corporate Offices: 110 Heartland Blvd., Brentwood, NY 11717 800-437-2826 (631) 243-2022 Fax (631) 243-2027
Distribution Centers: New York, Florida, Texas, Washington, California, Puerto Rico



© 2014, Satco Products, Inc.

A classic schoolhouse-style glass shade lends simple elegance to this restrained dining area.



SEA GULL LIGHTING

Milbana.com



adore® under-cabinet lighting
adoreyourhome.com

Goodbye ugly outlets and cord tangles. The adore® collection hides ample power — up and out of sight. Gorgeous LED lighting options bring the drama. Bluetooth™ speakers, tablet cradles, and phone docks bring your tech to life. It's time for a beautiful switch.

LIGHT SWITCHES | WALL PLATES | UNDER-CABINET LIGHTING | WIRELESS SYSTEMS FOR THE HOME

ITS BEAUTY
IS MEASURED



BY HOW
WELL IT
HIDES.

legrand®

designed to be better.™

THIS PHOTO A color and material contrast—crystal plus fabric, sparkle plus black—in this chandelier and the sconces adds an elegant touch as well as distinctive style.

OPPOSITE Light fixtures in this space are a 21st-century traditional update, giving the kitchen classic style.



One of the most popular traditional light fixtures remains the chandelier, and for good reason. It can fill a large room's ceiling space and act as a focal point. But just because you've chosen a chandelier with smaller lightbulbs doesn't mean you won't have enough light to brighten a room. The more bulbs in a chandelier, the greater the number of lumens, or total light, that the fixture is able to give off.



LEFT: PROGRESS LIGHTING. RIGHT: MAXIM

get the look

Traditional doesn't have to look staid, as this room—with fixtures that give a nod to the simple lines of Colonial designs—displays. Here's how to reproduce the look.



Margeaux

Torchlike sources match the pared-down elegance of the frame.

HINKLEY LIGHTING, hinkleylighting.com



Mason

Subtle metallic patterning keeps the focus on the sconce's light source.

HUDSON VALLEY LIGHTING, hudsonvalleylighting.com



Dynasty

Spun steel and antique brass offer a finely rendered material contrast.

PACIFIC COAST LIGHTING, pacificcoastlighting.com





transitional

Perhaps no other style demonstrates the modern commitment to personality-driven spaces more than transitional rooms. Elements in these rooms—and in their lighting fixtures—incorporate both classic accents and forward-thinking design elements.



THIS PHOTO Transitional decorating is often defined by an eclectic mix of materials, demonstrated by the wrapped fixture in this space.

OPPOSITE Elements of traditional and contemporary style shine through in transitional fixtures such as this gleaming chandelier.



Here's a trick: Install sconces above a mantel and place a mirror between them. The mirror will bounce the fixtures' light across the room.



ABOVE The shade on a portable lamp helps divert blinding light. Tulip-shape shades on the chandelier help cast gentle light both up and down.

LEFT Rustic materials offered inspiration for the choice of exposed bulb pendants in this casual kitchen eating space. Adjustable arms enable fixtures such as these to be used in multiple places—here, for both overall and task light.



ABOVE, SAVOY; RIGHT, HUBBARDTOWN FORGE

CURREY
& COMPANY



50 Best Friend Rd, Atlanta, GA 30340 • P: 678-533-1500 F: 678-533-1499

info@curreyco.com • Atlanta • Dallas • High Point • New York • www.curreyandcompany.com

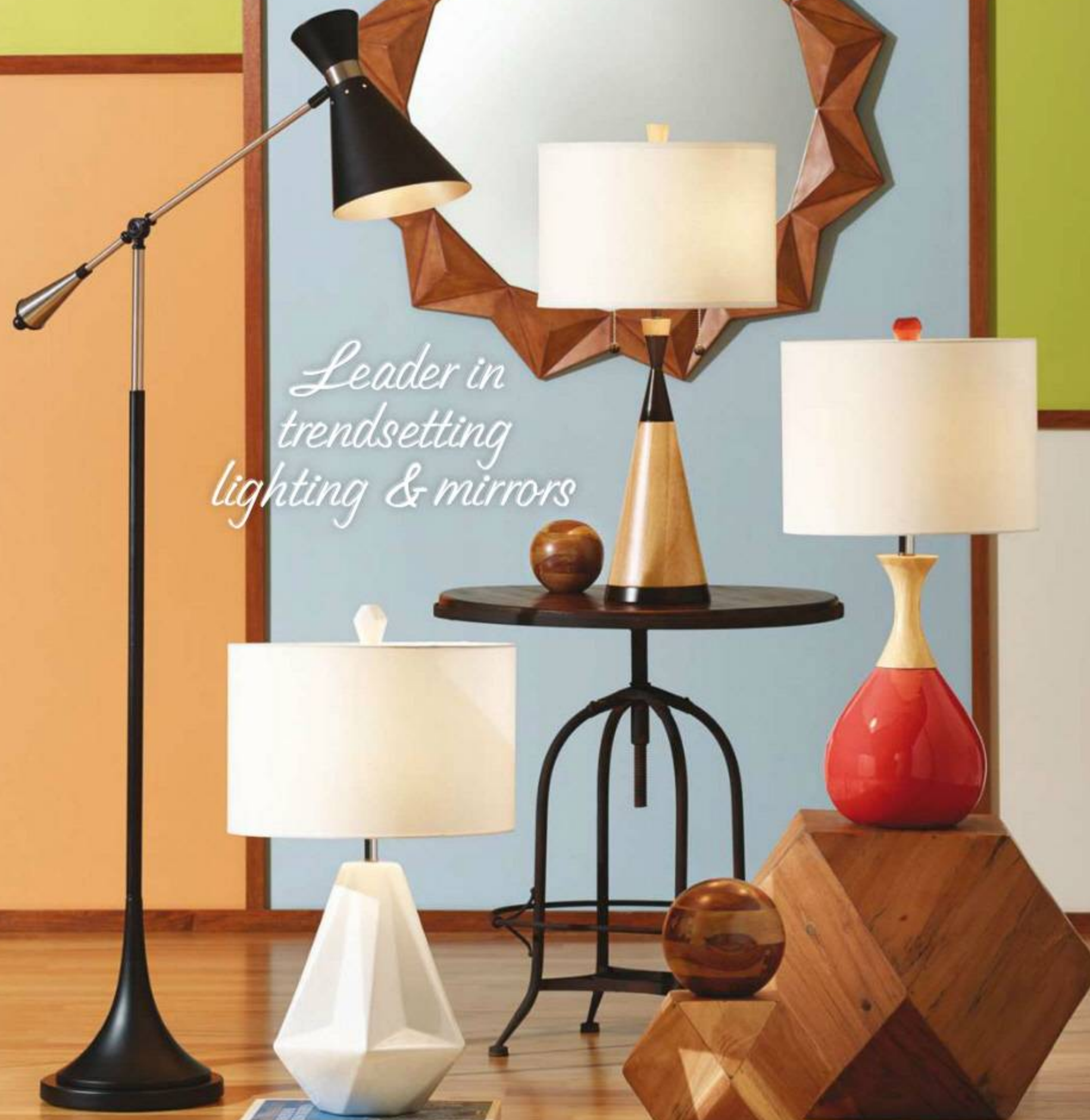


A light fixture bridges the design mix in this room by serving up a traditional material in a shape that's more modern in its interpretation.



CRYSTORAMA

PACIFIC COAST® LIGHTING



*Leader in
trendsetting
lighting & mirrors*

20238 Plummer Street, Chatsworth, Ca 91311 | 818.886.9751 | F: 818.886.5751
Trade Showrooms in High Point, Dallas & Las Vegas

Contact us to find your authorized dealer

www.PacificCoastLighting.com or 800.709.9004



THIS PHOTO Subtle accent lights add welcome ambient lighting under the island surface and on the open shelves, helping to play up the room's design.

OPPOSITE Boldly shaped lighting fixtures hold their own against the vibrant hues and patterns in this cheerful sitting area.

Mihanbana.com

*a*lthough used most often in kitchens, mini accent lights can supply both fun and function to other spaces. Slim-line fixtures work just as well on living room shelves, mantels, and buffet tops. Or use them as backlights for a bedroom headboard or to highlight crown molding. Very small spotlights create drama when they're directed upward on focal-point plants and sculptures.

LEFT: KICHLER LIGHTING RIGHT: ELK LIGHTING





THIS PHOTO Step-back tiering on this chandelier gives it presence without overwhelming the room. A mix of traditional elements (the nail-head trim chairs) and contemporary items (the pattern rug) give the overall design transitional punch.

OPPOSITE Some inventive ceiling fans included lamps that shine up as well as down helping to brighten and lighten ceilings.



THIS PHOTO: MONTE CARLO FAN CO. OPPOSITE: HINKLEY LIGHTING

get the look

The best-lit rooms are all about balance—between the necessary layers of light as well as the design elements. Here's how to replicate the look in your spaces.



Cirrus

Cloudlike shades add delicate movement to this standout chandelier.

HINKLEY LIGHTING, hinkleylighting.com



Woodland Lake

Tempered glass adds texture to this lantern-inspired pendant.

KICHLER LIGHTING, kichler.com



Flex-Up

A barely-there profile boosts the usability of this mini rope light.

JESCO LIGHTING, jescolighting.com





cottage

More easygoing than many other decorating styles, cottage-inspired design nonetheless displays a careful attention to detail and craftsmanship. It's ever-present in this collection of relaxing, welcoming rooms and lighting ideas.



THIS PHOTO In very sunny spaces and during high-light seasons, you may find yourself using overall light sources, such as recessed cans, less often. Installing multiple switches and dimmers gives you flexibility.

OPPOSITE Craft and materials take center stage in this lantern-influenced fixture.

t

he best-lit rooms deftly combine three layers of light: overall, task, and accent. Overall light casts a broad swath, helping banish shadows from corners. When overall light comes from a fixture such as a chandelier, it may also serve as a room's focal point. Task light—think of a pendant over a kitchen island—helps you when you require directed light. The final layer, accent light, draws attention to special features such as artwork.



LEFT: HINKLEY LIGHTING; RIGHT: KICHLER LIGHTING



THIS PHOTO Subtle details help tie lighting into the rest of the decor in this beach-inspired room.

OPPOSITE Rigorous lighting-design rules have given way to a less formal aesthetic, particularly in cottage-style homes. Here, the glass on the three-light pendant provides a unifying element, while subtle shifts in shape provide visual interest.

The color and opacity of a lampshade also influence light in a room. In these two rooms, illumination is scaled back thanks to opaque shades.

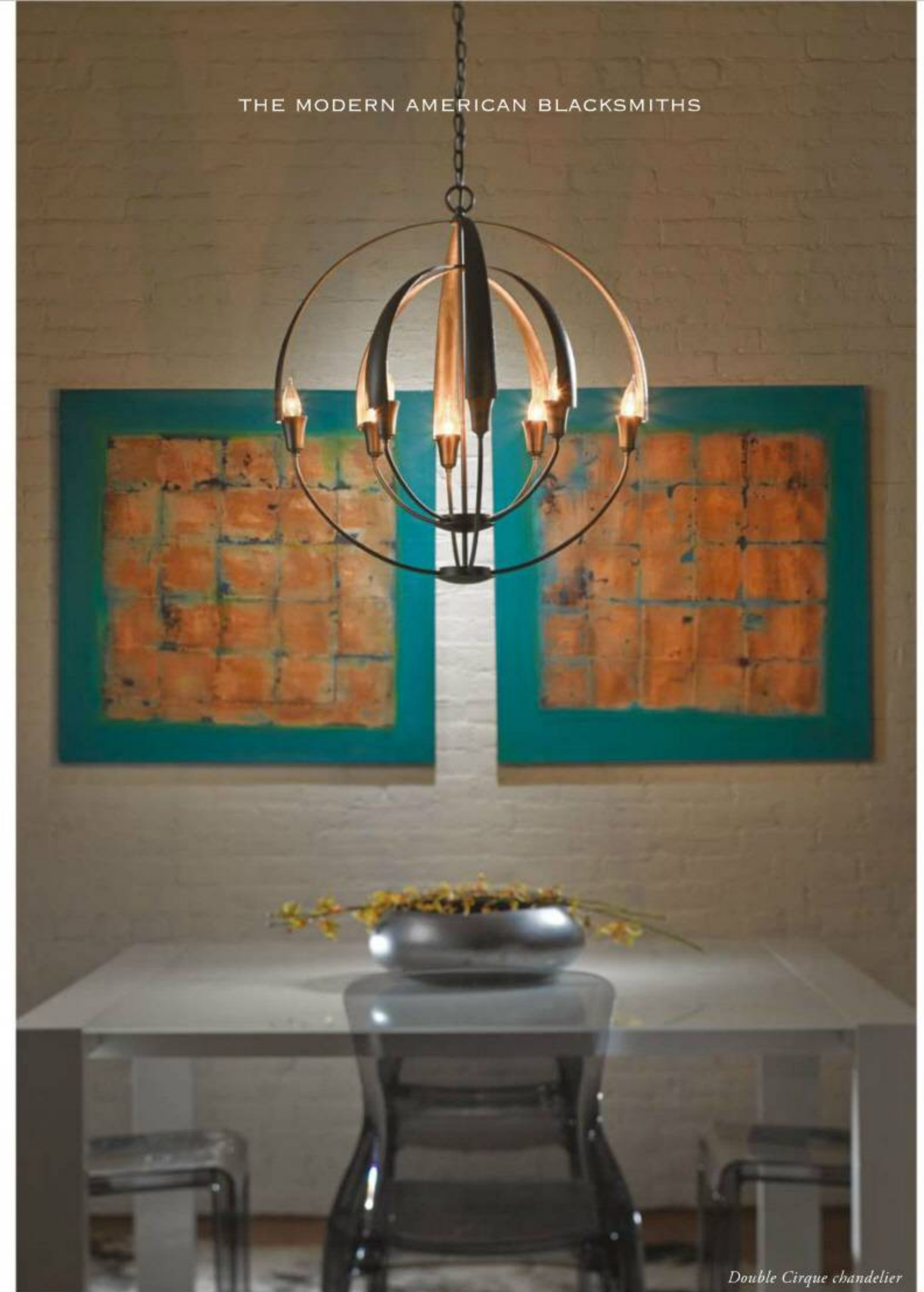


ABOVE The fixtures used here establish color focal points to visually ground the sunny nook.

LEFT Lighting design and placement are highly personal: A fixture height that works for one person may not work for another. Here, the fixture hangs closer to the work surface.



ABOVE: HINKLEY LIGHTING LEFT: SEA GULL LIGHTING



THE MODERN AMERICAN BLACKSMITHS

Double Cirque chandelier

HUBBARDTON FORGE®

DESIGNERS AND MANUFACTURERS OF FINE HAND-FORGED LIGHTING • COMMERCIAL / RESIDENTIAL

CASTLETON, VERMONT USA • 800.826.4766 • INFO@VTFORGE.COM • HUBBARDTONFORGE.COM

All designs and images ©1998-2014 Hubbardton Forge®. All rights reserved.



THIS PHOTO Graceful curves on a streamlined chandelier keep the decorating aesthetic simple and romantic.

OPPOSITE The standard height for chandeliers is about 30 inches above the tabletop. But that can change based on your personal preference, your ceiling height, and the lighting effect you want.

LEFT: SEA GULL LIGHTING OPPOSITE: PROGRESS LIGHTING



get the look

The charming collection of light fixtures in this space epitomizes the eclectic nature of cottage-style decorating.



Cameron

A textured drum shade distinguishes the clean-lined profile of this ceiling fixture.
FREDRICK RAMOND, fredrickramond.com



Eaton

A slim profile helps this semirecessed can disappear into the ceiling.
COOPER LIGHTING, cooperindustries.com



Hammered Glass Collection

Bold colors lend updated cottage style to these translucent pendants.
ELK LIGHTING, elklighting.com





exterior

Add lighting outside where there has been none, and the results can be so dramatic, it's akin to a magician performing a stunning sleight of hand. Exterior lighting can bring a variety of benefits, such as enhancing curb appeal and turning the focus on specimen plants or walkways.



THIS PHOTO Oversize fixtures with low-lumen bulbs help to illuminate a passageway.

OPPOSITE Exterior light fixtures can be more dramatic in order to draw attention to themselves, even as they provide safe passage or highlight the landscape.



It's a new twist on lighting

Go ahead, call us Lightly Twisted.™ We own it. We're stylish, inspired, eco-friendly and handcrafted. Everything you didn't expect in a lighting company. Offer your clients a new twist for their lighting needs: learn more about us from our catalog or contact one of our sales representatives.

varaluz Brought to you by Flow
info@varaluz.com | 702-792-6900 | varaluz.com



RIGHT: KICHLER LIGHTING. BELOW RIGHT: ACCESS LIGHTING

LEFT Too-small or too few lighting fixtures can feel floaty in an expansive landscape. Try placing them closer together or mixing smaller lights with larger fixtures.

BELOW Small exterior lights, hooded on both top and bottom, help keep glare from causing distracting night blindness.

Exterior lighting is often an afterthought, particularly in spaces such as decks and patios. But it can make the outdoors safer, help you use a landscape more often, and highlight focal points. Some additions, such as step lights, may be less expensive to hard-wire during construction. If you're planning a new or revamped space, visit a lighting showroom to ask about placement and wiring, as well as wireless options.





OPPOSITE Check the label on exterior fixtures: If you're outfitting a sheltered area, you may be able to use a light source rated UL Damp rather than UL Wet.

RIGHT For exterior spaces with restrained, organic landscaping, detailed lighting offers an opportunity for visual and color interest.

BELOW Inside or out, a space up to 75 square feet calls for a fan about 36 inches in diameter.

THIS PHOTO: WESTINGHOUSE; RIGHT: SEA GULL LIGHTING; ABOVE: RIGHT: HUBBARDTON FORGE



In general, if you're using a single fixture at a door, its height should be about one-third the height of the door. Two fixtures can be slightly smaller—about a quarter of the height of the door.

The designer lights that you design.



1

Choose your fixture and finish



2

Choose your shade



3

Enjoy your new lighting



Creating your own stylish lighting is as easy as 1-2-3! Just pair your imagination with our stunning selection of artist-inspired fixtures and shades. Create your perfect pendant or wall fixture for any room. You can even transform existing recessed lighting into a pendant or light fixture with the Recessed Light converter. Visit our website to learn how. The choices are endless and the results, simply gorgeous. Bring out the designer in you.

Visit www.westinghouselighting.com/designeryou or call (800) 999-2226.



Flow
VARALUZ
varaluz.com



buyer's guide

What's your style preference? Do you find yourself drawn to old-world lines, Arts and Crafts materials, or contemporary craft? Whatever your design preference, there's a lighting choice for you.

chandeliers

Who says artwork must be reserved solely for walls? These sculpturelike chandeliers transform cubic footage overhead into display space.



Ingenook
QUOIZEL
quoizel.com



Ghost
ILEX
ilexlight.com



Chandelier 14182
ELK LIGHTING
elklighting.com



Quatrefoil
FRAMBURG/HOUSE OF TROY
framburg.com



Atrium
HINKLEY LIGHTING
hinkleylighting.com



Let Lithonia Lighting LED products create a better space for you!



LED Wherever people live, work and play, you'll find Lithonia Lighting® LED lighting.

- Create a superior, inviting environment
- Save energy
- Lower maintenance costs

Want to see more?

Download our brochure at www.acuitybrands.com/residential



chandeliers

TREND ALERT: DRUM

FOR CLEAN-LINED simplicity and elegant presence in medium to large spaces, try a chandelier encased in a drum shade. Here are a few stylish options.



Castello
ARTCRAFT LIGHTING
artcraftlighting.com



Bingo
PROGRESS LIGHTING
progresslighting.com



Sedilo
UTTERMOST
uttermost.com



Modern
DOLAN DESIGNS
dolandesigns.com



Barolo
FREDRICK RAMOND
fredrickramond.com



Live Love Laugh
FEISS
feiss.com



Galaxia
VARALUZ
varaluz.com



Ashton
JAMES R. MODER
jamesrmoder.com



Willow
CRYSTORAMA
crystorama.com



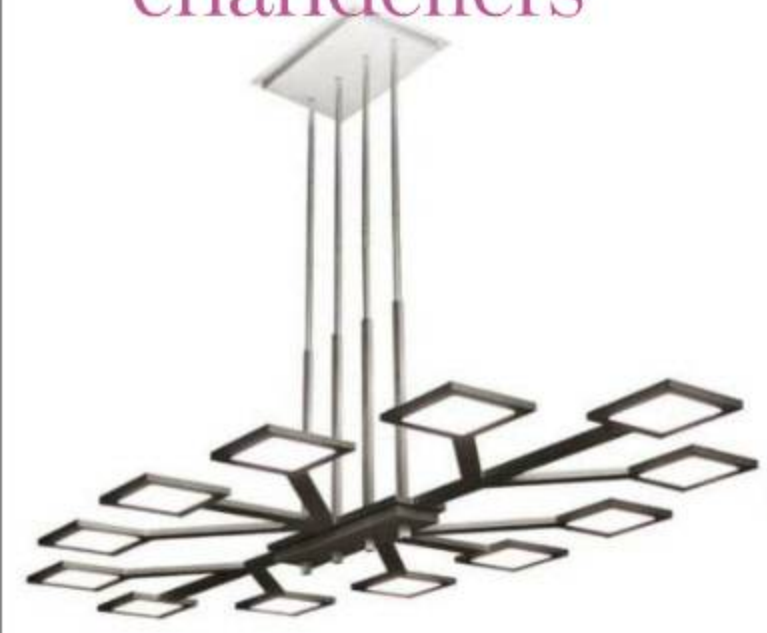
ITS ABOUT THE EXPERIENCE

MONTREAL - TORONTO - DALLAS - ST LOUIS - MIAMI

ARTCRAFTLIGHTING.COM | FACEBOOK.COM/ARTCRAFT.LIGHTING



chandeliers



Modern Forms Vela
WAC LIGHTING
wacighting.com



Harding
ARTERIOR'S
arteriorshome.com



Carrabelle
QUOIZEL
quoizel.com



Simone
FRAMBURG/HOUSE OF TROY
framburg.com



WWW.CORBETTLIGHTING.COM

EXQUISITE CRAFTSMANSHIP
BROUGHT TO LIGHT



Biza
TECH LIGHTING
techlighting.com



Flamingo
CURREY AND COMPANY
curreyco.com



Grand Plaza
DESIGNERS FOUNTAIN
designersftn.net



Veneto Luce
JUSTICE DESIGN GROUP
jdg.com



WWW.HUDSONVALLEYLIGHTING.COM



Venetian
JAMES R. MODER
jamesmoder.com



Weathered Bronze 5-Light
WESTINGHOUSE LIGHTING
westinghouselighting.com



Rock Candy
LBL LIGHTING
lblighting.com



Woodstock
FEISS
feiss.com



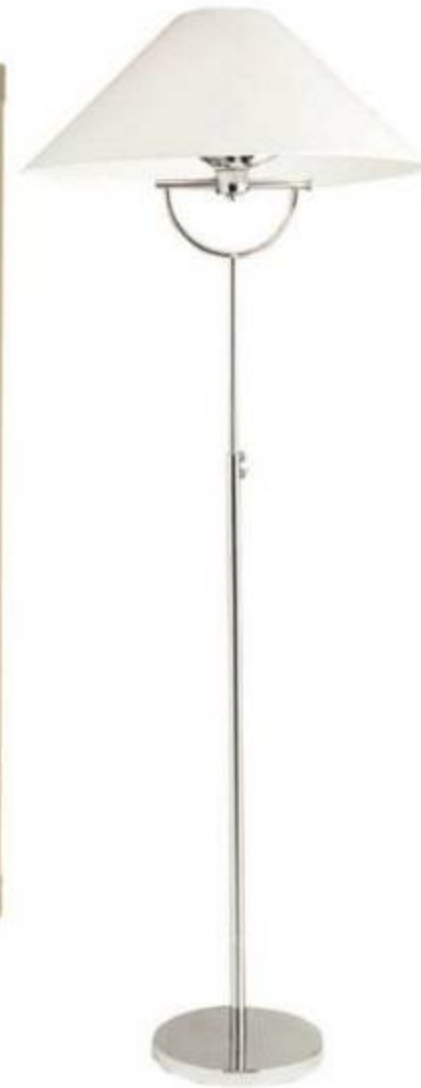
WWW.TROY-LIGHTING.COM

lamps

With options for tabletops, floors, and more, lamps are a practical, beautiful way to brighten your home and boost its style.



Maison Loft
PACIFIC COAST
LIGHTING
pacificcoastlighting.com



Steve & Chris Portable
ARTCRAFT
artcraftlighting.com



Netto Modern
LITE SOURCE
lite-source.com



Carnival
CURREY AND COMPANY
curreyco.com



Portable Desk/Piano Lamp
HOUSE OF TROY
houseoftroy.com



Balance
HUBBARDTON FORGE
hubbardtonforge.com



Carentino
UTTERMOST
uttermost.com



Belle
QUOIZEL
quoizel.com



Mercata Blue
PACIFIC COAST
LIGHTING
pacificcoastlighting.com



Diamond Chepstow
ELK LIGHTING
elklighting.com



Torre
LITE SOURCE
lite-source.com



Kyle
QUOIZEL
quoizel.com



Dakota
JUSTICE DESIGN GROUP
jdg.com



Occasion Portable
VARALUZ
varaluz.com

FORM WITH FUNCTION

LIGHTING DESIGNERS have thrown out the rulebook when it comes to lamp design, with fixtures that play off tradition, but with a modern twist.

lamps



Baskets of Knowledge
WAKANINE
wakanine.com



Empire
PACIFIC COAST
LIGHTING
pacificcoastlighting.com



Gilroy
ARTERIORES
arteriorshome.com



Overton
ARTERIORES
arteriorshome.com



Coral Raindrop
PACIFIC COAST
LIGHTING
pacificcoastlighting.com



Alternating Current
Deskalade
VARALUZ
varaluz.com



Athens
ELK LIGHTING
elklighting.com



2634 Table Lamp
HOLT KOETTER
holtkoetter.com



Diaga
QUOIZEL
quoizel.com



Khalessi
CURREY AND COMPANY
curreyco.com



Folio
HUBBARDTON FORGE
hubbardtonforge.com



Scatchard
HOUSE OF TROY
houseoftroy.com



Distinctive **LED** lighting for every room of the home.

Illuminate your living spaces with innovative, high quality, and affordable lighting by Nora Lighting. Learn more about the products featured here at www.noralighting.com/bhg.

Illuminating the future

NORALIGHTING.

Tel. 800.686.6672 www.noralighting.com



ceiling fixtures

Whether it's a starburst fixture or a nearly invisible flush-mount, lights for the ceiling meet a variety of design and practical needs.



Regal Springs
WESTINGHOUSE LIGHTING
westinghouselighting.com



RS 9704
LIGHTS UP
lightsup.info



Flourish
HINKLEY LIGHTING
hinkleylighting.com



Garfield Park
SEA GULL LIGHTING
seagulllighting.com



Adonis
QUOIZEL
quoizel.com



Sawyer
NUVO/SATCO
satco.com



Hastings
HUDSON VALLEY LIGHTING
hudsonvalleylighting.com



Newbury
CRYSTORAMA
crystorama.com



Coupe
PROGRESS LIGHTING
progresslighting.com



Trace
TECH LIGHTING
techlighting.com



Wave
BESA LIGHTING
besalighting.com

LIGHT THE RIGHT WAY

VERSATILE AND PACKING a ton of lighting punch, small-scale ceiling fixtures brighten corners, accent artwork, and maximize flexibility. Here are three options.



Cori Track
NORA LIGHTING
norahlighting.com



Mizar
JESCO LIGHTING
jescolighting.com



LED Contempo
ELCO LIGHTING
elcolighting.com

ceiling fixtures



Aurora
RECESSO BY DOLAN
recessolighting.com



Broche
CRYSTORAMA
crystorama.com



Double Organza
DOLAN DESIGNS
dolandesigns.com



Entity
CSL LIGHTING
csllighting.com



Newbury Station
DESIGNERS FOUNTAIN
designersftn.net



Beaumont
QUOIZEL
quoizel.com



Ghost
NORWELL LIGHTING
norwellinc.com



Bijou
FREDRICK RAMOND
fredrickramond.com



Arabesque
FEISS
feiss.com



Astral
CURREY AND COMPANY
curreyco.com



Fiona
LBL LIGHTING
lblighting.com



Lola
CRYSTORAMA
crystorama.com



RS 9430
LIGHTS UP
lightsup.info



Smith
JUSTICE DESIGN GROUP
jdg.com



LED Mini Recessed
GM LIGHTING
gmlighting.net

JUSTICE DESIGN



The Perfect
Lighting Choice

JUSTICE DESIGN GROUP, LLC
www.JDG.com

pendants

One, two, three, or more: Clusters of pendants are no longer just for the kitchen. Use these inventive designs to inspire your own lighting revamp.



Satin
ELCO LIGHTING
elcolighting.com



Houston
NUVO/SATCO
satco.com



Bell
TROY LIGHTING
troy-lighting.com



Botella
BESA LIGHTING
besalighting.com



Grayer
ARTERIOS
arteriorshome.com



10331 Pendant
ELK LIGHTING
elklighting.com



Nicholas
NORA LIGHTING
noralighting.com



Finn
HUBBARDTON FORGE
hubbardtonforge.com



LED Mini Pendants
JUNO
junolightinggroup.com



DESIGN WITH LIGHT
LIGHT WITH DESIGN

CORFO

Due to its lightweight construction, the Corfo makes a bold statement while maintaining its' light and airy form.



 **EUROfase**
LIGHTING

www.eurofase.com | 1.800.660.5391

follow us on      

pendants



Early Electric Freeport
WAC LIGHTING
wacighting.com



Uptown Liberty
QUOIZEL
quoizel.com



Glass Pendant
ACCESS LIGHTING
accesslighting.com



Colored Coral Floral
WAKANINE
wakanine.com



Everyly
KICHLER LIGHTING
kichler.com



Archer
DESIGNERS FOUNTAIN
designersftn.net



Architectural Pendant
JESCO LIGHTING
jescolighting.com



Dance
PROGRESS LIGHTING
progresslighting.com



Vibe
FREDRICK RAMOND
fredrickramond.com



Dolly
LBL LIGHTING
lblighting.com



Double Organza Pendant
DOLAN DESIGNS
dolandesigns.com



Juno® WarmDim® Retrofit LED Modules, Private Residence, St. Charles, Illinois.



Think **LED**...
Think Juno Lighting Group

WarmDim®
Bringing Warmth to LED Dimming™

Think about upgrading your existing downlights to LED efficiency ... with Juno **retrofit LED modules**, it's fast and affordable

There's never been a faster, more affordable way to experience LED efficiency. Juno **retrofit LED modules** install easily in most any standard 6" housing. Simply screw the supplied whip adapter into your existing medium-base socket, quick-connect to the LED module, and you're essentially done.



Now you're set to enjoy all the benefits of Juno's advanced LED technology. Like 600 or 900 brilliant lumens from as little as 10.5 energy-saving watts. All-in-one construction that reduces cost and speeds installation. Optional WarmDim® dimming that warms color temperatures as you dim. And 50,000 hours of maintenance-free service.

Downlight trim or adjustable eyeball, Juno retrofit LED modules will have you thinking LED again and again. They are available now, so let the upgrades begin at www.junolightinggroup.com.



JUNO LIGHTING GROUP
by Schneider Electric
Shine On.
www.junolightinggroup.com

ceiling fans

Circulate your style—and the air—with these innovative elements for indoors and out.



Elliptical
MONTE CARLO
montecarlofans.com



Pearson
FANIMATION
fanimation.com



Clarity
MONTE CARLO
montecarlofans.com



Quality Max
SEA GULL LIGHTING
seagulllighting.com



Stealth
CASABLANCA FAN
casablancafanco.com



Yuree
KICHLER LIGHTING
kichler.com



Aris
HUNTER
hunterfan.com



Frey
KICHLER LIGHTING
kichler.com



Beckwith
FANIMATION
fanimation.com



Penbrooke Select
EMERSON FANS
emersonfans.com



Ariel
SAVOY HOUSE
savoyhouse.com



Areto
CASABLANCA FAN
casablancafanco.com



Bubble
MATTHEWS FAN CO.
matthewsfanco.com



CASABLANCA[®]
FAN COMPANY

CRAFTED *to* PERFECTION

CasablancaFanCo.com

ceiling fans



Quince
WESTINGHOUSE LIGHTING
westinghouselighting.com



Coronado
REGENCY CEILING FANS
regencyfan.com



Terna
KICHLER LIGHTING
kichler.com



Bradshaw
EMERSON FANS
emersonfans.com



Tuscany
MONTE CARLO
montecarlofans.com



Dagny
MATTHEWS FAN CO.
matthewsfanco.com



Air Pro
PROGRESS LIGHTING
progresslighting.com



Kaya
FANIMATION
fanimation.com



Yur
KICHLER LIGHTING
kichler.com



Harmony
WESTINGHOUSE LIGHTING
westinghouselighting.com



Velocity
SAVOY HOUSE
savoyhouse.com



Roundabout
WESTINGHOUSE LIGHTING
westinghouselighting.com



Andros
REGENCY CEILING FANS
regencyfan.com

Designers Fountain®
Distinctive Lighting

Integrated LED Lanterns: The stylish way to reduce your energy costs

Beacon
Dark Sky

Barrister
White Opal Glass

Marquette
Hammered Glass

Paxton
Seedy Glass

Hadley
Clear Ribbed Glass

See these unique designs and more, visit www.designersfntn.com

Uses 70% Less Electricity
No Bulbs to Replace - Ever!

Instant On - Any Climate
Last Longer Than LED Bulbs

sconces

Fine-tune your home's decorating with these versatile, stylish sconces.

Halo LED
VARALUZ
varaluz.com



Clear Seeded 8702CP
ACCLAIM LIGHTING
acclaimlighting.com



Rochdale
KICHLER LIGHTING
kichler.com



Izzy
CURREY AND COMPANY
curreyco.com



3961 Series
BESA LIGHTING
besalighting.com



Weston
NORWELL LIGHTING
norwellinc.com



Zanadoo
ARTERIOS
arteriorhome.com



Chime
TROY LIGHTING
troy-lighting.com



Ellipse
DOLAN DESIGNS
dolandesigns.com



Bleecker
HUDSON VALLEY LIGHTING
hudsonvalleylighting.com



Engage
PROGRESS LIGHTING
progresslighting.com



Hyde Park
SAVOY
savoyhouse.com



Brick
HOLT KOETTER
holtkoetter.com



Poseidon
ACCESS LIGHTING
accesslighting.com



Ashland
LBL LIGHTING
lblighting.com



11595 Sconce
ELK LIGHTING
elklighting.com

STYLE-FORWARD SCONCES

THREE DIFFERENT SCONCES, three very different styles: Imagine the design possibilities with a simple switch-out in your hallway, bath, or dining room.

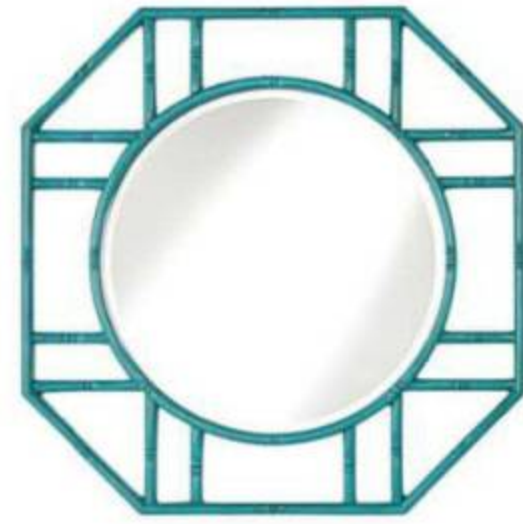
sconces



Elena
WESTINGHOUSE LIGHTING
westinghouselighting.com



Stonington
QUOIZEL
quoizel.com



Bamboo Bliss
PACIFIC COAST LIGHTING
pacificcoastlighting.com



Brindille
HUBBARDTON FORGE
hubbardtonforge.com



Lanza
HINKLEY LIGHTING
hinkleylighting.com



Mura
TECH LIGHTING
techlighting.com



Celeste
FREDRICK RAMOND
fredrickramond.com



Beaker
NUVO/SATCO LIGHTING
satco.com



Lucern
DESIGNERS FOUNTAIN
designersftr.net



Ghost
NORA LIGHTING
norahlighting.com



Sun Dagger
JUSTICE DESIGN GROUP
jdg.com



LIVEX[®]
LIGHTING

INDOOR, OUTDOOR & EXTRAORDINARY
YOUR RELIABLE PARTNER

EST 1993

see more at:
www.livexlighting.com
phone: 800-761-8056
sales@livexlighting.com

bulbs

As varied as the fixtures they fit into, today's lightbulbs provide design and function in one energy-smart package.



Crystal G16
BULBRITE
bulbrite.com



LED Par16
MAXLITE
maxlite.com



11-Watt R30 LED E26
WESTINGHOUSE LIGHTING
westinghouselighting.com



Thread Series
BULBRITE
bulbrite.com



Vintage Lamps
WESTINGHOUSE LIGHTING
westinghouselighting.com



Sunset Effect
SYLVANIA
sylvania.com

mini lights

Steps, cabinets, ceilings, walls: Mini lights offer untapped possibilities for safety and accent.



Undercabinet LED Task Light
JUNO LIGHTING
junolightinggroup.com



LED Puck Light
NORA LIGHTING
norahlighting.com



LED Mini Step Light
ELCO LIGHTING
elcolighting.com



Mini Light
JUNO
junolightinggroup.com



HyBrite
NORA LIGHTING
norahlighting.com



PK 611 LED
JESCO LIGHTING
jescolighting.com

controls

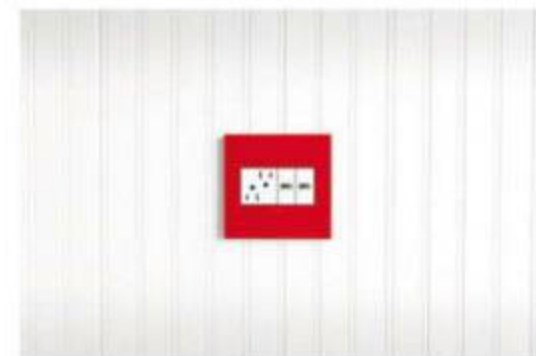
Imagine the possibilities with lighting controls that integrate with your tech-centered world.



RadioRA 2 Wall Mount
LUTRON
lutron.com



Wave
LEGRAND
legrand.us



USB Outlets
LEGRAND
legrand.us



Portable Nightlight Flashlight
LEGRAND
legrand.us



Halogen Single-Pole Dimmer
LUTRON
lutron.com



Home Control+ App
LUTRON
lutron.com

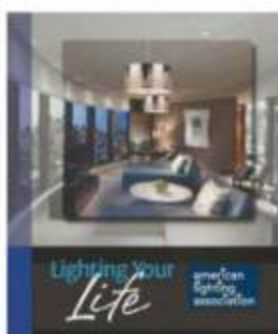
Lighting Idea Center

24/7 INFORMATION & INSPIRATION

Welcome to the Lighting Idea Center!

YOUR ONE-STOP RESOURCE TO LIGHTING BRANDS AND IDEAS GUARANTEED TO HELP MAKE ANY ROOM IN YOUR HOME SHINE

A Peek at Lighting's Future



American Lighting Association

Lighting Your Life, an American Lighting Association publication, shows you how to use lighting to add beauty and drama to a room, as well as save energy and create a functional environment. With images of the latest lighting designs throughout, this brochure offers up-to-date home lighting information, including the latest trends in lighting and energy-efficiency tips.



Visit americanlightingassoc.com.



Feiss

From inspiration to the finest design details – at Feiss, we create uniquely beautiful indoor and outdoor lighting fixtures to heighten your home decor.

Achieve your design vision at www.feiss.com.



Kichler

See Kichler for the decorative lighting, ceiling fans, lamps and mirrors as well as landscape and undercabinet lighting solutions that are made for your life and your style. Get inspired using our online catalogs and galleries.

Visit kichler.com to see our complete line.



Progress Lighting

Progress Lighting offers hundreds of collections for any residential or commercial lighting project. In addition, the manufacturer's award-winning literature helps guide and educate individuals in selecting the perfect combination of decorative fixtures and energy efficient options for the home.

Please visit us at www.progresslighting.com for our complete offering.



Quoizel

Quoizel creates timeless lighting fixtures and home accessories designed with you in mind! They balance form and function and provide an unparalleled level of beauty and style. Quoizel is one of the nation's leading distributor of decorative lighting.

Please visit us at www.Quoizel.com for more information.



Monte Carlo Fan Company

At Monte Carlo, we specialize in fashion-forward ceiling fans that are not only beautiful to look at but also engineered to work efficiently.

Find the perfect fan for your room at www.montecarofans.com.



Hinkley Lighting

Let Hinkley Lighting transport you to an exciting new world where lighting, design and fashion come together. Discover the perfect style, size and finish with Hinkley's insider tips from designers, inspiring photography and measurement guidelines.

Find lighting you will love at hinkleylighting.com.



Lutron Electronics

Add comfort and convenience to any space with Caséta™ Wireless dimmers, which work with dimmable LEDs and compact fluorescents as well as halogen and incandescent bulbs. You can control these dimmers from anywhere in a room—or from your car—with a Pico® remote control.

Visit www.Lutron.com or call 1-888-LUTRON1 for more information.



American Lighting Association

Bright Ideas, an e-newsletter from the American Lighting Association, offers interesting home lighting tips, interior design ideas and other timely information to help you light your home.

Visit americanlightingassoc.com.



LEGRAND

Wonder what lighting manufacturers have in the works that will change your home's fixtures? The Lighting for Tomorrow Awards provide a glimpse into evolving technologies. Winners included:

- Solid-State Lighting: LED Fixtures**
- Legrand: adorne Under-Cabinet Lighting System; also recipient of an Innovation Award
 - Juno Lighting Group: Juno Arc LED Trac Fixture; also noteworthy recognition for Slope Ceiling Generation 3 LED Downlight
 - LITON Lighting: 2-inch Mini-Arc Recessed LED Downlight
 - Philips Consumer Luminaires North America: LED Pendant Holder
 - Samjin LND Co., Ltd: Circular Ceiling Light
- Solid-State Lighting: LED Replacement**
- LEDnovation: Bright for Life BR30 LED Lamp
 - SWITCH Lighting: SWITCH infinia 60 LED A-Lamp
- Solid-State Lighting: LED Retrofit Kits**
- Evolution Lighting LLC: Zoom Retrofit
 - Nesora Light Technologies: Integra LED Disc; also received an Innovation Award
- Solid-State Lighting: OLED Fixtures**
- Modern Forms, a WAC Lighting company: Vela Chandelier
- Lighting Controls**
- Lutron Electronics Co., Inc.: Maestro Occupancy Sensor C-L Dimmer; also noteworthy recognition for Hi-Lume A-Series LED driver

Lighting You Can Use

american lighting association

Whether you're looking for fixture inspiration or real-world design ideas, the American Lighting Association can help.

Lighting a room, much less a whole house, is difficult. Lighting showrooms make it easier, and the American Lighting Association (ALA) makes it easier still.

The ALA is the public voice and advocate of leading lighting manufacturers, showrooms/retailers, manufacturers' representatives, and designers. But the group is also an advocate for homeowners searching for information, ideas, and inspiration to better light their spaces. With information provided by the ALA on the association's website, americanlightingassoc.com, you can ...

Continued on next page



JUNO LIGHTING GROUP

Continued from previous page

- Search for lighting showrooms near you.
- Find certified lighting consultants, designers, contractors, and manufacturers based on type of light fixture.
- Sign up to receive an e-mail newsletter, *Bright Ideas*, that has helpful tips and inspiration for all kinds of lighting issues in your home.
- Send additional copies of this magazine to friends and family.
- Review key insights from lighting experts and designers, including former TLC host and author Laurie Smith.
- Answer questions you have about everyday lighting: what layers of light really are, how to swap out your favorite incandescents for new bulbs, even the proper height to hang a chandelier.

Find more information at americanlightingassoc.com.

UTTERMOST

To see our products and where to buy, visit UTTERMOST.COM



www.uttermost.com • info@uttermost.com

Mihanbana.com Mirrors · Art · Lighting · Accessories · Clocks · Alternative Wall Décor · Accent Furniture · Rugs



MILO line-voltage pendants

LBL

LIGHTEN UP YOUR LIFE/STYLE.



Find inspiration at www.lblighting.com

Your Lightbulb Questions Answered

Q • I still don't understand: Why were my favorite bulbs eliminated?

A • The law that initiated the change is now almost seven years old. Passed in 2007, the Energy Independence and Security Act created improved energy-efficiency requirements for many items, including lightbulbs. It didn't eliminate incandescents, but it does require decreased energy use by all lightbulbs. It also mandated a phase-in program as well as more explanatory labels. Most traditional incandescents—the familiar bulb that Thomas Edison invented—have a short life, waste lots of energy, and generate huge amounts of heat, so they were unable to meet the new standards.

Q • It's difficult to adjust. Why was this so important?

A • Lightbulbs make a very real impact on your home's energy usage—and your wallet. The average home has about 50 lightbulbs. Incandescents were very inexpensive when compared with higher-efficiency

bulbs, but they also burned out fairly quickly, so they had significant replacement costs. Halogen incandescents, CFL, and LED bulbs last longer and consume less energy. Weigh cost against savings: If you invest in these bulbs (which are more expensive), some estimates place energy-usage reductions at about 90 percent.

Q • Give me the rundown: If I want to replace a traditional incandescent, what do I buy for a halogen incandescent, CFL or LED?

A • If you can't remember watts, go for lumens, a measure of the amount of light given off by the bulb. Clip and save this handy chart:

40 watts = 450 lumens

60 watts = 800 lumens

75 watts = 1,100 lumens

Lighting for every room - www.accesslighting.com

Custom Fluorescent and LED

WHERE EXCLUSIVITY MEETS AFFORDABILITY

ENDLESS POSSIBILITIES

- ARCHITECTURAL PENDANTS AND WALL SCONCES**
Customize and build your perfect fixture with our on-line configurator
- RECESSED LIGHTING**
Select from an extensive range of Round and Square Downlights in LED and traditional light sources for general overhead lighting
- SHELF, UNDERCABINET, TOE KICK, COVE AND SOFFIT LIGHTING**
Create Task and Accent lighting with the largest offering of ultra low profile, flexible and rigid, plug-and-play lighting fixtures in LED and Fluorescent



The latest in stylish, technologically advanced, eco-friendly lighting solutions
JESCOLIGHTING.COM



Q • The last time I went to buy an LED bulb, the selection was limited. Will that change?

A • Yes—and with remarkable speed. LEDs now fit the traditional “A” type of bulb, which is what many homeowners place in their lamps. And with each passing year, the range of options improves. For example, there are now CFLs that work with dimmer switches and in both recessed cans and chandeliers.

Q • I broke a CFL and am worried that I've spilled mercury. What should I do?

A • CFLs do contain a very small amount of mercury—about 5 milligrams—sealed in the glass tube. For comparison's sake: Old mercury thermometers contained 500 milligrams of mercury. So the risk from the mercury in bulbs is very small. For specific guidelines, view www2.epa.gov/cfl/cleaning-broken-cfl. After CFL bulbs burn out, you may be able to recycle them at many lighting showrooms and retail spots. For disposal guidelines and dropoff locations, visit energystar.gov.

Q • I don't understand the new labels and how to translate the information to the right bulb that gives off light I'm familiar with.

A • One of the key points on the new lightbulb labels is the Kelvin (K) number, which measures the light color. Old incandescents were about 2800K. So, to replace a 60-watt incandescent with a CFL, you'd look for a 13- to 15-watt CFL at 2800K. Plus, you'll save significantly—with just one bulb.

INCANDESCENT BULB WATTS	COMPARABLE CFL WATTS	YEARLY SAVINGS
25	5	\$1.75
40	9-11	\$2.60
60	13-15	\$3.94
75	18-20	\$5.01
100	23-27	\$6.57
150	30-39	\$10.07
200	42	\$13.84
300	55	\$21.46

10 Things to Do This Year to Improve Your Lighting

1 Change the oldest lighting fixture in your home.

Lighting manufacturers have made it easier than ever to replace energy-hogging fixtures and bulbs with those that last longer and trim utility bills. When you're at your lighting showroom, simply look for products with the ENERGY STAR label.

Fixtures with the label have these features:

- Lower energy use—about one-fourth that of traditional lighting
- Reduced replacement costs. ENERGY STAR lights last between 10,000 to 50,000 hours—that's anywhere from seven to 22 years of normal use
- Dimming, auto shut-off, and motion sensors on some fixtures
- A three-year warranty

2 Fix your media room lighting. TV-focused spaces need less overhead and more ambient and task lighting, such as lamps, to help reduce glare on screens.

3 Swap out the lightbulb you leave on the longest.

Bulbs are also covered in the ENERGY STAR program (see Idea 1), and their impact is significant. ENERGY STAR-labeled bulbs:

- Can save \$40 to \$135 in energy costs per bulb
- Cut energy use by about 75 percent—and generate 75 percent less heat
- Also carry a three-year warranty

4 Add a fixture outside an unlit door. Beautiful light is great, but safety and convenience are also top concerns for exterior fixtures. If you've got an unlit entrance—a side door, a garage door—choose either one sconce or a matching set. You'll stop fumbling for keys and feel more secure, too.

5 Check the height of your dining room chandelier. In general, keep the bottom of the chandelier about 30 inches from the top of the table.

Turn Recessed Lights from Boring to Beautiful Instantly Introducing RECESSO LIGHTING by Dolan Designs

CONVERT RECESSED LIGHTS



STEP 1
MOUNT CEILING RING AROUND RECESSED LIGHT



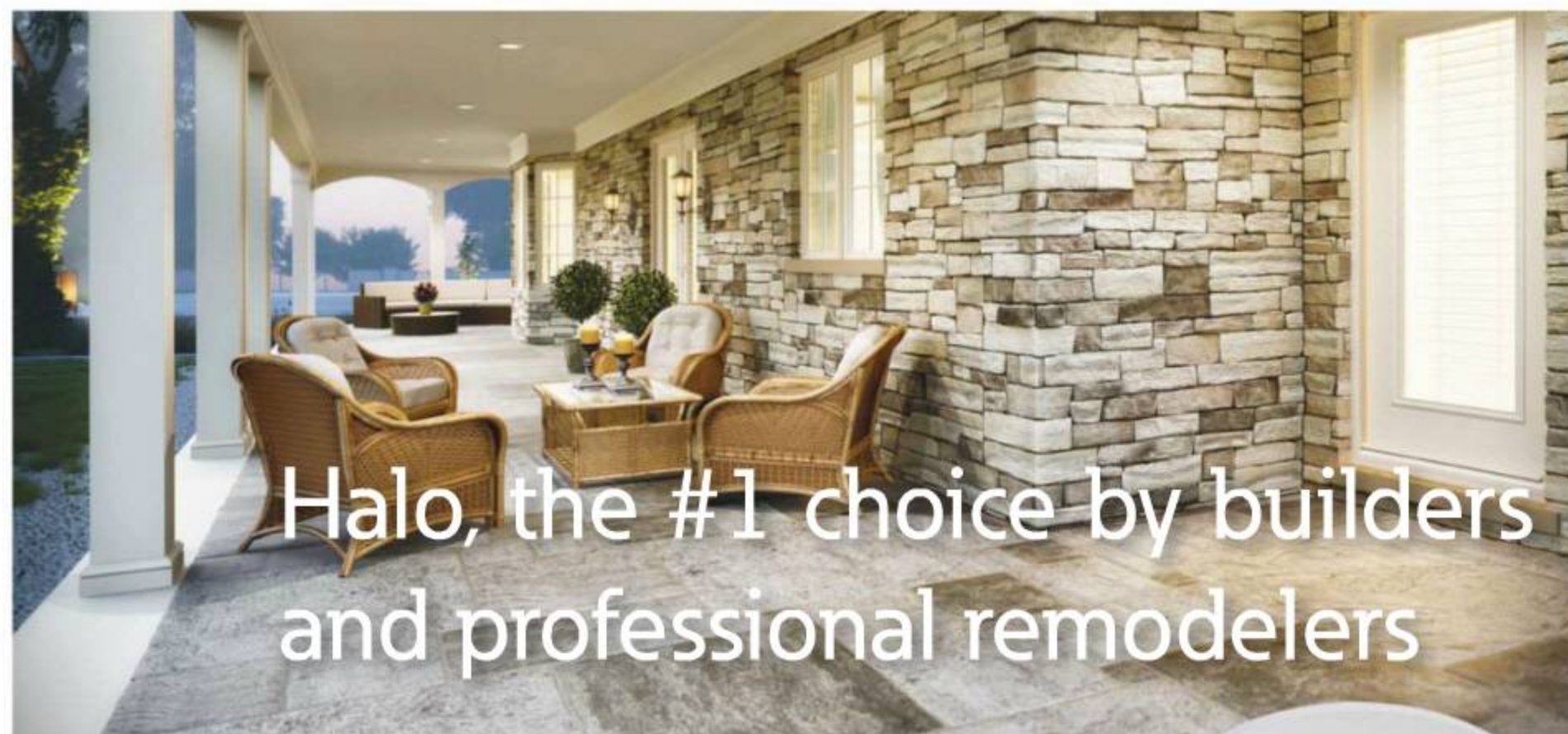
STEP 2
TWIST & CLICK RECESSO FIXTURE TO RING LIGHT



STEP 3
ENJOY YOUR NEW FIXTURE!



See our full collection of award winning designs at www.recessolighting.com or visit your local lighting showroom



Halo, the #1 choice by builders and professional remodelers

Halo's innovative, high-quality lighting fixtures incorporate the newest energy-effective technologies and feature award-winning patented design innovations to save time, money and energy.

To learn more, visit www.cooperlighting/halo



Halo Surface LED Downlight (SLD)

6 Replace at least one light switch, if not more. Newer bulbs respond better to newer switches. With wireless options (usually operated with wireless remotes) you can control light from around the room or elsewhere in the house.

7 Pick a new shade for a lamp you love. Lampshades have more practical design power than they get credit for. Lighter-colored versions can help diffuse light in a wider circle. A dark shade concentrates the light, focusing it on a surface. A new shade is also a chance for you to try out a punch of color and pattern before you redo a whole room.

8 Download a lighting control app. Smartphone and tablet apps may also enable you to control window treatments, home temperature, and other systems.

9 Find a new ceiling fan. Newer ceiling fan motors use much less energy and also operate cooler to the touch than older motors. Many are also much quieter than older fans.

10 Swap your holiday lights for LED versions. Americans gobble up 2.22 million kilowatt hours of electricity each year to power mini holiday lights. LED holiday bulbs can trim your energy budget and last about 40 holiday seasons, according to the Environmental Protection Agency.

MONTHLY ENERGY COST OF A HOLIDAY LIGHT STRING

Incandescent C-9 lights	\$10.00
LED C-9 lights	\$0.27
Incandescent mini lights	\$2.74
LED mini lights	\$0.82

Cooper Lighting

Mihanban.com

Common Lighting Mistakes—and How to Fix Them

A too-small exterior lantern. The general rule of thumb is that post- or fence-mounted fixtures only look about half their size from the street. Given a choice, go bigger.

A mixed-up light-switch load. If you have a multibulb fixture and swap a single burned-out bulb with a high-efficiency LED bulb, you may “confuse” the fixture, especially if it’s on a dimmer. Look for specialized dimmers that are able to respond to multiple ages and kinds of bulbs.

Glare from outdoor fixtures. Too-bright exterior lights can create blinding glare. Choose lower-lumen bulbs to help your eyes better switch between darkness and light, and swap out unhooded fixtures.

An undersize ceiling fan. Make sure you have at least 18 inches of clearance between the edge of the blades and all walls, and at least 7 feet of clearance from the floor. Less than that, and not enough air may circulate.

A fan that circulates incorrectly. Air should be pushing downward in cooler months.

The wrong LED bulb for lamps. Go for an ENERGY STAR version, which shines in all directions, not just upward.

The wrong recessed-can bulb. Many reflector bulbs cast light in all directions, which is wasted illumination in a recessed fixture. Instead, go for a reflector bulb which pushes all the light to the bulb’s front.

Bad exterior fixture placement. Outdoor fixtures should be mounted about 66 inches above the door’s threshold.

The wrong UL rating. A UL Dry Rating fixture may be used in any area not directly exposed to excessive moisture and water. One with a UL Damp Rating may be used outdoors and in bathrooms as long as it doesn’t have contact with moisture. A fixture with a UL Wet Rating can be used anywhere outdoors or indoors.

Switched floodlights and spotlights. LED spotlights cast a beam that’s about 45 degrees wide and relatively concentrated for bright light. Floodlights create more spread-out light—beams about 120 degrees wide, making them better for illuminating larger areas.

CFLs have a reputation for being a little bit fussy—but in reality they’re not. They do, however, need proper installation in order to max out their lifespan. Here are mistakes you can avoid.

THE MISTAKE	TRY THIS
You use a non-dimmable CFL in a dimmable fixture	Your CFL must be labeled as dimmable.
You use a CFL in a recessed can or other enclosed fixture	The heat buildup in recessed cans will affect CFLs. Choose CFLs specifically labeled for use in enclosed fixtures.
You install a CFL in a motion-sensor-capable fixture	Frequent on-off cycles may not be a good match for CFLs.
Your CFL burns out for no apparent reason	Try ENERGY STAR products, which go through a rigorous testing process.



www.SeaGullLighting.com

AFFORDABLE ELEGANCE

Sea Gull Lighting
LIFE ILLUMINATED | SINCE 1919

© 2014 Sea Gull Lighting Generation Brands™



TECH LIGHTING®

SOPHISTICATION DEFINED

Genuine platinum, silver, bronze and gold silkscreened in Italy onto hand-blown Italian glass

COMPLEMENTARY PRODUCTS

ECRAN VORLAGE RIDEAU MODELE AMALIA RENATA

Explore www.techlighting.com for more inspiration.
©2014 Tech Lighting. Tech Lighting is a registered trademark of Tech Lighting

Generation Brands™



fantasy,
meet
function



House of Troy + FRAMBURG
americanlightingbrands.com

Mihanbana.com



Design Upgrade

Ever wonder how those brilliantly designed rooms you see in magazines would look without their lighting? Our “before” photo on the cover shows you: Dull and dark, the dining room feels ordinary and outdated. But with the pop of pattern and shine in the pretty sconce and oversize chandelier, the gathering space comes alive with sparkle and texture. For product details, see Resources, [page 118](#).

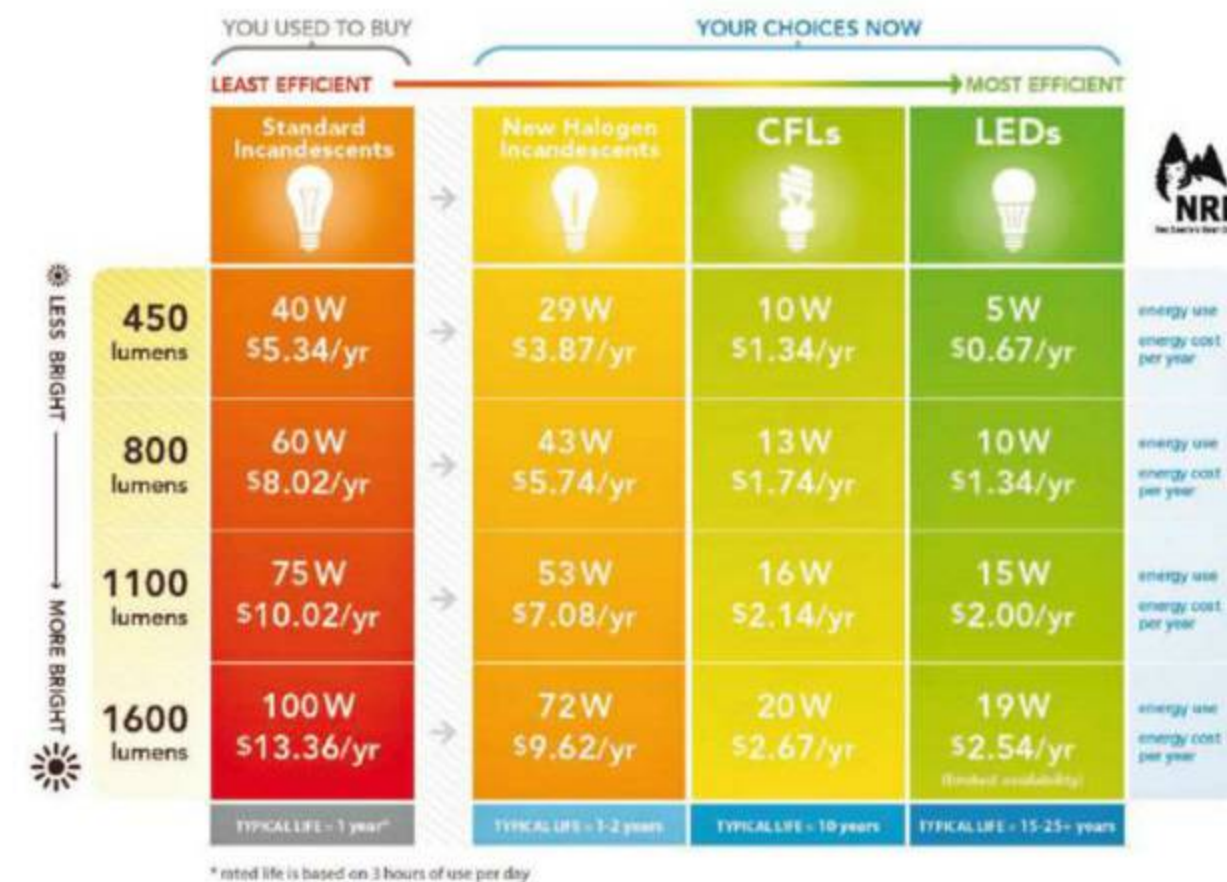
Darling,
I just didn't want to be
the only thing smokin'
in this house.



BULBRITE
Nostalgic SMOKE Collection
The Modern Approach to Vintage Lighting

www.bulbrite.com/Nostalgic

Budget Sense for Bulb Swaps



Credit: switchboard.nrdc.org/blogs/nhorowitz/fall_back_into_energy-saving_1.html. Reprinted with permission.

Still not convinced that higher-efficiency bulbs can make an impact in your home? Check out this graphic, which shows conversion options for traditional incandescents and compares energy use. Replacing one 75-watt incandescent with a 15-watt LED equals almost \$8 in energy savings in just one year.

TRENDS CUTOUT PATTERNS



Cutouts. From the runway to home fashions, cutout patterns are inspiring top designers. Get inspired today at CRYSTORAMA.com



www.CRYSTORAMA.com

resources

Use this list of featured lighting manufacturers to find more information, trends, and products related to the content of this magazine. Many of these companies sell products through lighting specialty stores. To locate your nearest lighting specialty store, visit americanlightingassoc.com.

Access Lighting
800/828-5483
accesslighting.com

Acclaim Lighting
323/213-4626
acclaimlighting.com

Artcraft
artcraftlighting.com

Arteriors Lighting
800/338-2150
arteriorshome.com/shop/lighting

Besa Lighting
800/446-2372
besalighting.com

Bulbrite
800/528-5555
bulbrite.com

Casablanca Fan Co.
888/227-2178
casablancafanco.com

Corbett Lighting
626/336-4511
corbettlighting.com

Crystorama
516/931-9090
crystorama.com

CSL Lighting
626/336-4511
csllighting.com

Currey & Co.
curreyco.com

Designers Fountain
800/228-6197
designersftn.net

Dolan/Recesso
800/929-4325
dolandesigns.com

Eaton's Cooper Lighting Business
cooperindustries.com

Elco Lighting
800/522-2626
elcolighting.com

Elk Lighting
800/613-3261
elklighting.com

Emerson Fans
800/237-6511
emersonfans.com

Fanimation
888/567-2055
fanimation.com

Feiss
800/969-3347
feiss.com

GM Lighting
866/671-0811
gmlighting.net

**Hinkley Lighting/
Fredrick Ramond**
800/446-5539
hinkleylighting.com

Holtkoetter
800/899-5444
holtkoetter.com

**House of Troy/
Framburg Lighting**
800/428-5367
houseoftroy.com

Hubbardton Forge
802/468-3090
vtforge.com

Hudson Valley Lighting
hudsonvalleylighting.com

Hunter Fan
888/830-1326
hunterfan.com

Jesco Lighting
800/527-7796
jescolighting.com

Juno Lighting Group
800/367-5866
junolightinggroup.com

Justice Design Group
213/437-0102
jdg.com

Kalco/Allegrì
kalco.com

Kichler Lighting
866/558-5706
kichler.com

LBL Lighting
800/323-3226
lblighting.com

Legrand
877/295-3472
legrand.us

Lights Up
718/499-4209
lightsup.info

Lite Source
lite-source.com

Lutron
888/588-7661
lutron.com

Matthews Fan Co.
847/680-9043
matthewsfanco.com

Maxim Lighting
800/486-2946
maximlighting.com

Maxlite
800/555-5629
maxlite.com

Monte Carlo Fan Co.
800/519-4092
montecarlofans.com

Nora Lighting
800/686-6672
norlighting.com

Norwell/ILEX
800/822-2831
norwellinc.com

Pacific Coast Lighting
800/709-9004
pacificcoastlighting.com

Progress Lighting
864/678-1000
progresslighting.com

Quoizel
631/273-2700
quoizel.com

Regency Ceiling Fans
regencyfan.com

Satco Lighting
satco.com

Sea Gull Lighting
800/347-5483
seagulllighting.com

Sylvania
800/544-4828
sylvania.com

Tech Lighting
847/410-4400
techlighting.com

Troy Lighting
626/336-4511
troy-lighting.com

Uttermost
800/678-5486
uttermost.com

Varaluz
702/792-6900
varaluz.com

WAC/Moderne
800/526-2588
waclighting.com

Wakanine
512/354-7889
wakanine.com

Westinghouse
westinghouselighting.com

To find a lighting specialty store near you:

Turn to the only lighting resource you need—the American Lighting Association. Call 800/274-4484 or visit americanlightingassoc.com to locate a lighting store, find helpful lighting tips, and sign up for a newsletter.

COVER RESOURCES: Wall sconce: Kichler, 69094 from the Cloudburst collection; kichler.com. Lighted mirror: Kichler, 7820; kichler.com. Wallpaper: Brewster Home Fashions, Crystal Beaded Wallpaper by Eijffinger (pattern 301-290); 800/366-1700; brewsterhomefashions.com. Chandelier: Crystorama, Palla Chandelier 528-SA; crystorama.com. Drapery: Calico, Dupioni in Gwalior; calicocorners.com. Dining chair: Mitchell Gold+Bob Williams, ADA Soft Suede #100536; mgbwhome.com. Dining table: Mitchell Gold+Bob Williams, Kimora; mgbwhome.com. Side chairs: Bungalow 5, Kensington Armchair in gray limed oak; bungalow5.com. Area rug: Shaw Floors, 3Q164 Nomadic Elegance in gray; shawfloors.com. Buffet: Bausman & Co., 1140 Buffet in 5800 oak finish; bausmanandcompany.com. Bowl: Torre & Tagus, Branch Bowl; torretagus.com. White vases: Two's Company; twoscompany.com. Serving bowl: JCPenney, Happy Chic by Jonathan Adler Elizabeth Greek Key Serving Bowl; jcpenney.com.

INSPIRED DESIGN

Setting the stage for decorative lighting since 1958.

Taking inspiration from art, high fashion and furniture design, Crystorama lighting touches every style category and features a mix of metals, finishes and crystals. Crystorama lights are of the moment, but they possess an enduring beauty and quality that transcends trends.



► PALLA



Everyone's style is different. And there's a place for Crystorama Lighting fixtures in every home.

Get inspired www.CRYSTORAMA.com

CRYSTORAMA



finishing touch

Make a grand entrance and a defining aesthetic statement with a bold, attention-grabbing fixture.

Lighting™ (ISSN 1941-3459), 2014. Lighting is published once a year in April by Meredith Corp., 1716 Locust St., Des Moines, IA 50309-3023. In Canada: Mailed under Publications Mail Sales Product Agreement No. 40069223. Canadian BN 12348 2887 RT. Better Homes and Gardens is a registered trademark in the United States, Canada, and Australia. Better Homes and Gardens marca registrada en México. © Meredith Corp. 2014. All rights reserved. Printed in the U.S.A.



fanLink!
by Fanimation Ceiling Fans



Smart Phone, Meet Smart Fans

Life made easier! Coming soon, control your ceiling fans with your smart devices! Stayed tuned for the release of the Bluetooth® compatible line of fanLink™ receivers by Fanimation.



Who left the lights on?™

© 04/2014 Lutron Electronics Co., Inc. P/N 308-0019 REV B



Stop wasting. Start saving.
with a motion sensor light switch from Lutron

Automatic. Hands-free. Smart.

Turns room lights off after you leave.
Turns room lights on as you enter.
Senses daylight and only turns lights on when needed.

Affordably priced—about \$20.

Pays for itself—Save up to 50% lighting energy*

Install it yourself—Replace your existing light switch
in about 15 minutes.

Works with all light bulbs—even LEDs.

Great for every room: bathrooms, laundry rooms,
garages, kids' rooms.

Visit us at www.ChooseLutron.com or
call 1.888.LUTRON1 (1.888.588.7661)



Maestro® occupancy sensor switch
Interior Design Best of Year Award



* Savings based on replacing a standard switch with an occupancy sensor in a residence. Source: Heschong Mahone Group, 1999. Lighting Efficiency Technology Report. Prepared for the California Energy Commission. Actual savings may vary based on occupant use among other factors.